

# PORT SOLUTIONS

# EAE Group

# About Us

EAE Group, which started its industrial journey with EAE Electric in 1973, is a preferred brand in the international market. EAE has grown rapidly beginning from the first day of its foundation and has gradually expanded its production and areas of activity in different industries.



LED Lighting and Luminaires



Rack Cabinets and LV Enclosures



Busbar Power Distribution Systems



Installation Solutions



Cable Ducts and Support Systems



Building and Lighting Automation Systems

## EAE Group Basic Information

EAE is one of the world leaders in the field of BUSBAR systems and in the electrical products market.



Foundation  
**1973**



**2.500** employees  
**More than 500**  
engineers and  
technical experts

**Exports to**  
more than 100  
countries



Approximately  
**280,000** m<sup>2</sup> outdoor  
production area



**3**  
In-house  
R&D centre



**More than 30** patents  
**More than 300** brands  
**More than 500**  
industrial designs

**6**  
Factory



## Certificates

It continues its production activities in accordance with ISO 9001 Quality Management, ISO 14001 Environmental Management, ISO 45001 Occupational Health/Safety, ISO 50001 Energy Systems Management and ISO 27001 Information Security Management Systems Standards. The conformity of electrical products it produces with the world standards has been certified as a result of the tests carried out by DEKRA and CESI laboratories.





## EAE In The World



EAE Companies



EAE Office



EAE Distributor

## EAE Group Of Companies



**EAE Aydınlatma**  
LED Lighting Luminaires



**EAE Elektrik**  
Busbar Energy Distribution Systems



**EAE Elektroteknik**  
Cabin and Panel Board Systems



**EAE Teknoloji**  
Lighting and Building Automation



**EAE Makina**  
Sheet Metal Processing Machines



**EAE Italy**  
EAE Group European Region Marketing and Sales Centre



**EAE Russia**  
Busbar, Cable Duct and Lighting Luminaires



**EAE Germany**  
Busbar and Lighting Luminaires



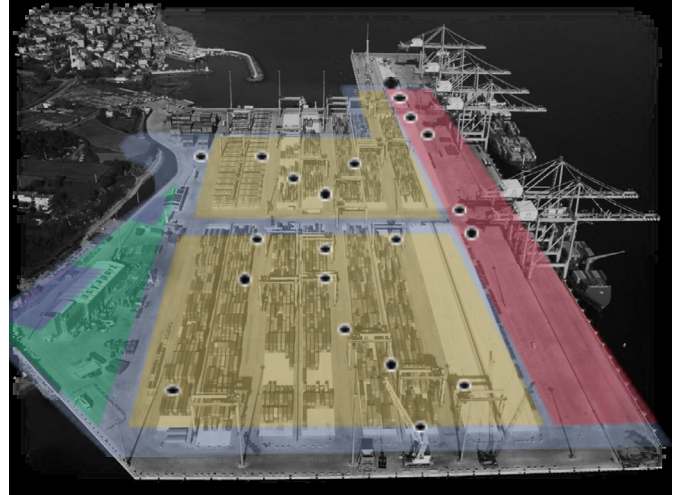
**EAE USA**  
Busbar, Cable Duct and Lighting Luminaires



**EAE Australia**  
Busbar and Lighting Luminaires

## MAIN REGIONS OF THE PORT

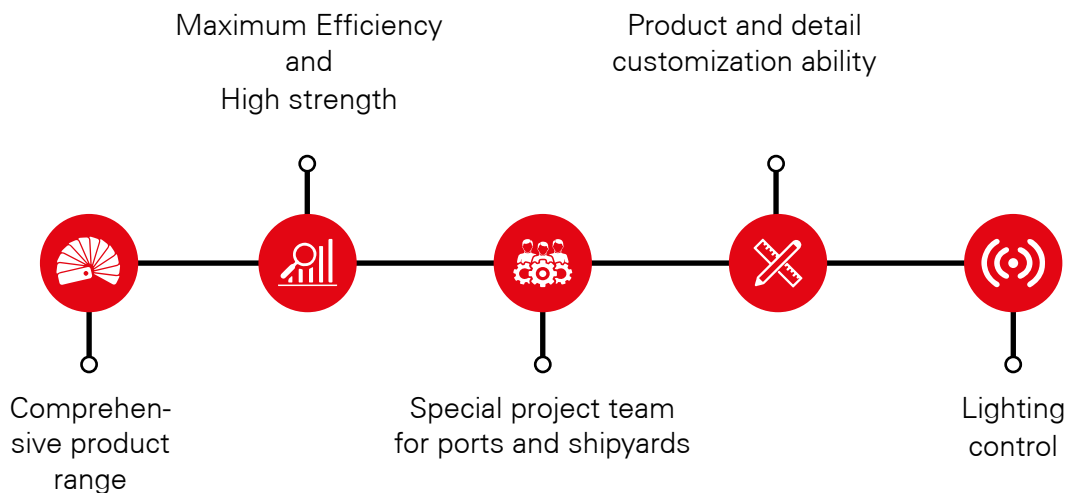
- Mobile Equipment RTG-RMG-STS-QC CRANES
- Dock Area
- Container Area
- Cfs Activity Area
- Office and Warehouse Buildings
- Access Routes and Surrounding Area



## EAE PORT PROJECT TEAM

Today, performance and conformity with the standards in the port sites can only be provided by right lightingsolutions. EAE Lighting, continues to carry its professionalized experience to the sites, with LED luminaires, thanks to thousands of applications it develops with the state-of-the-art technology in the industrial field.

EAE Lighting, offers lighting solutions, which pushes the limits in terms of efficiency, for satisfaction of its customers, with the project engineering service it has created especially for port and shipyard sites,- for which it displays sensitivity. Its expert team, which carries out project designing for many different sites such as container storage sites and port ship loading sites with project engineering service, aims to operate in outdoor working sites with challenging environmental conditions by providing installation discovery, apparatus discovery and layout plans.





## As EAE PROJECT TEAM;

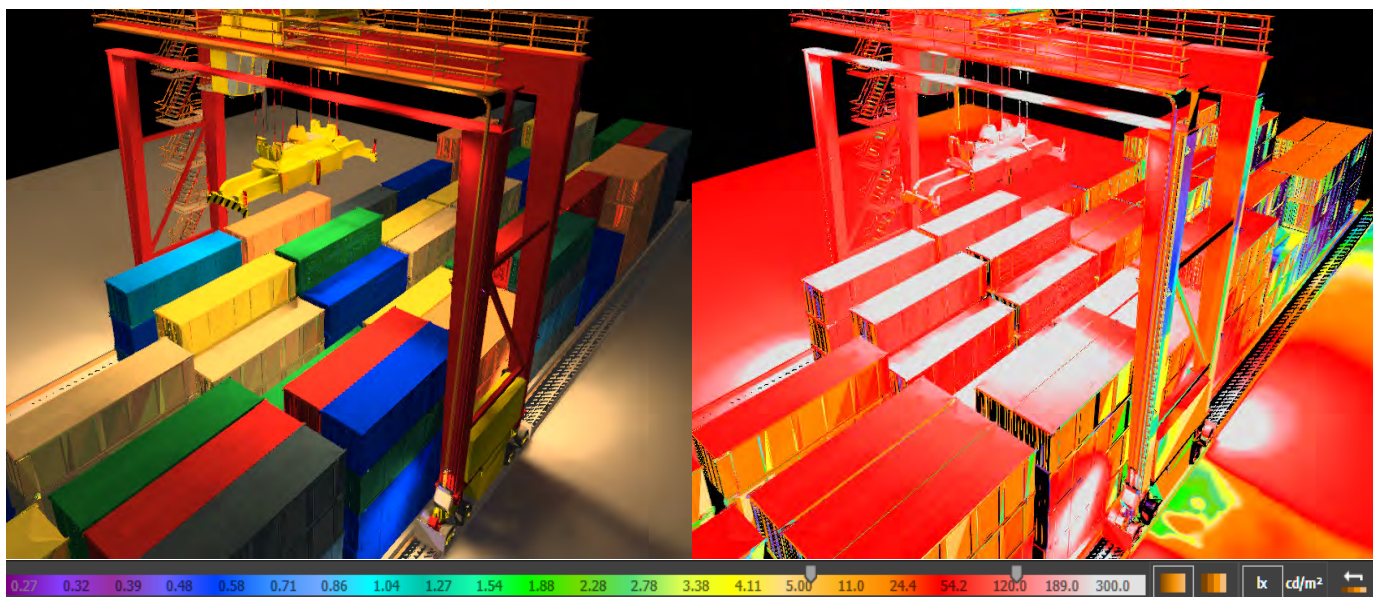
We provide the following services:

- Professional solutions for sea environments with our 6-person expert team, which consists of engineers and technical experts,
- Visual assessments and consulting services,
- 3D design and lighting calculations, luminaire arrangement and free of charge model applications,
- CCT,CRI, UGR and luxury levelled measurements,
- Supervision and commissioning services for lighting and control devices.

We realize a turnkey project service with project management, which covers all of these.



# EAE Lighting; As DIAL partner, professional lighting account service...



**Dx** Thanks to the Dialux EVO Lighting Design Programme, realistic lighting distribution map of the area is drawn in detail, by making 3D models of the site and the equipment and selecting targeted lighting levels, correct product and photometric curve.

## Lighting Control



**PLANNING ACCORDING TO PORT  
REGIONS**



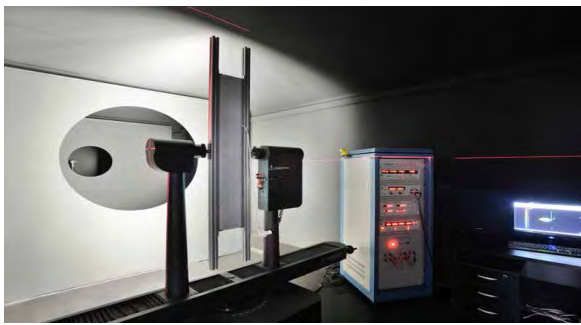
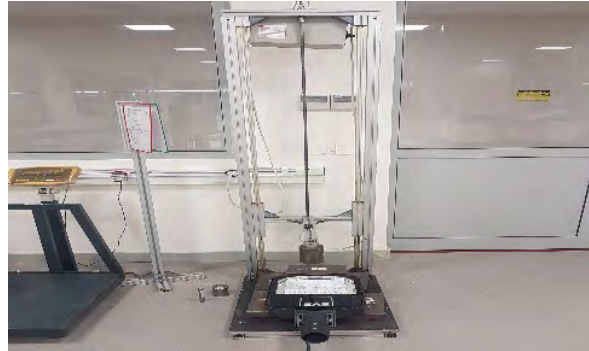
**ENERGY SAVING AND LONG LIFE  
CYCLE**



**DATA COLLECTION AND  
REPORTING**



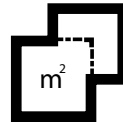
# Maximum Performance and Perfect Strength



 **DEKRA**



Accredited lighting laboratory  
which was established in 2007



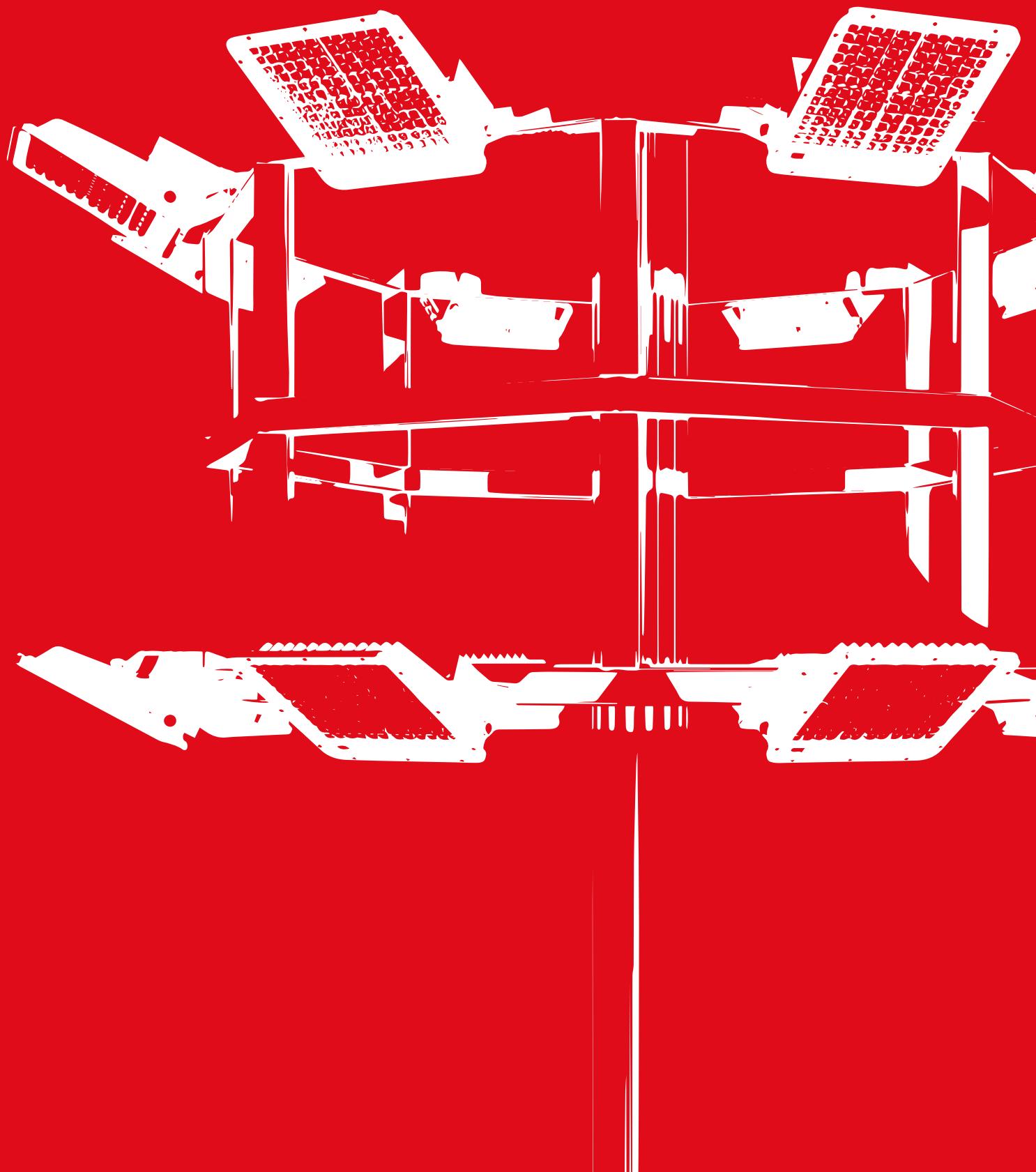
1800m<sup>2</sup> total indoor space



20 separate test step

- High Efficiency (lm/W) Rate
- Electrical and Performance Test
- Versatile Vibration Tests
- Latest LED Technology
- Heavy Mechanical Resistance Tests
- Planning According to Port Regions
- Thermal Tests
- Photometric and Photobiological Test
- Energy Saving and Long Life Cycle
- Corrosion and Spraying Test
- IK and IP Impact Resistance
- Data Collection and Reporting





# PORT AND SHIPYARDS

## PROJECT LIGHTING SOLUTIONS



---

### LED FLOODLIGHTS IN THE PORTS 10

---

#### General Field Lighting Solutions 14

---

Prolit EFFECT 16

Prolit PLUS 17

G-prona 18

---

#### RTG CRANES 20

---

Prolit PLUS 24

Prolit V.3 25

Prolit COMPACT 26

Galis 27

---

#### SSG CRANES 28

---

Prolit PLUS 32

Prolit V.3 33

Prolit Compact 34

Galis 35

---

#### SHIPYARD FIELDS 36

---

Prolit V.3 38

Prolit COMPACT 39

Galis 40

---

#### OTHER SOLUTIONS 42

---

Sprona CRN 44

Revoled-X 46

HBC 48

RA 1-2-3 49

---

#### REFERENCES 50

# LED FLOODLIGHTS IN THE PORTS

Lighting systems account for a large part of the energy spent in the ports. This means approximately 32% of a port's total energy consumption. It directly affects many factors, such as providing energy consumption, job safety and adequate lighting quantities. The right choice of port lighting systems has become an extremely important issue nowadays.

As EAE Lighting, we are trying to produce professional solutions with our LED floodlight luminaires by eliminating limits in efficiency in harsh environment conditions.





**EAE**

LIGHTING



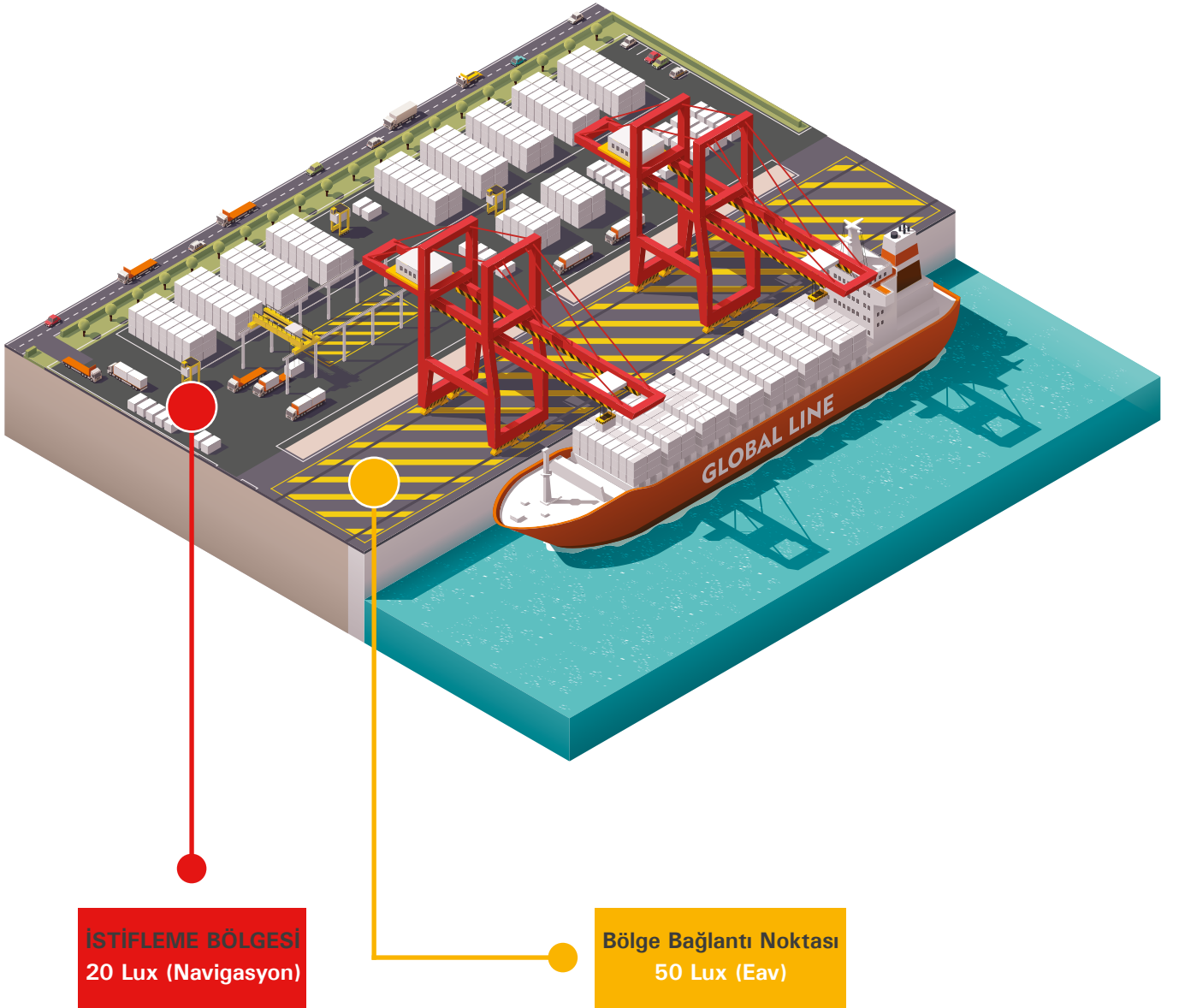


# LIGHTING LEVELS IN THE MARINE FACILITIES

First precautions will be started by ensuring labour safety in the marine environment, which are mentioned within SIP009 norm (see Page 5) for specific light levels and obtained values.

We can identify specific lighting levels in 2 main zones, one of which is a stacking zone and the other is a port zone, in a short time, as assigned below.

EAE lighting solutions and project experts will help you to avoid possible violations of light according to the predefined values within the norms.



## SIP 009 STANDARD

### Health and Safety in The Ports (UK)

Lighting Levels		Average (luxury)	Minimum (luxury)
Safety-On The Dock	Access (Attachments) Zones	20	5
	In The Operational Fields	5	1
HS(G)38 <sup>3</sup>	Truck park, corridors, circulation routes, the place where the movement happens, machine, people and vehicle.	20	5
	Kitchens, factories, mounting components etc. The places where the works are carried out this requires perception of the details	100	50
Vendor dispatch Requirements	Access, Approaches and working areas.	Unspecified	5
	Transit Zones	Unspecified	1
ILO 152 <sup>5</sup>	Access Zones	Unspecified	50
	In The Operational Fields	Unspecified	10

<sup>2</sup> ACOP25, "Safety On The Dock" - 1988 Approved Application Rules  
<sup>3</sup> HS(G) 38, "Lighting is working" - Health and Safety Responsible, 2002  
<sup>4</sup> SI No. 16370, Vendor Shipment "Access tools" regulations 1988  
<sup>5</sup> ILO 152, "Job Safety and Health in Dock Works" - International Labour Organization, 1979

## BS-EN 12464-2 LIGHT AND LIGHTING. OUTDOOR WORK PLACES

**Table 5.7 - Industrial sites and warehouse fields**

Ref. no.	Field, task or activity type	$E_m$ lx	$U_o$ -	GRL -	$R_a$ -	Explanations
5.7.1	Short-term use of large units, raw materials, loading and unloading solid bulk goods	20	0,25	55	20	
5.7.2	Continuous, wide-ranging use units and raw materials, shrinking position for loading, unloading and lifting cranes, open loading platforms	50	0,40	50	20	
5.7.3	Reading addresses, covered loading platforms, use of tools, ordinary reinforcement and casting tasks in the concrete facilities	100	0,50	45	20	
5.7.4	Forceful electrical power, machine and pipe installation, inspection	200	0,50	45	60	Use local lighting



# GENERAL SITE LIGHTING SOLUTIONS

Floodlights are effective lighting luminaires that are used for multi-purpose and provide uniform distribution of light throughout the entire area where they are located. LED floodlights, which are especially used in harbour and shipyards, are among the large and powerful helpers of site lighting.

EAE LED floodlights that offer excellent lighting quality to their users with an optical design, which has been developed specially for the application, and a wide range of lumen package options; it is ideal for all professional indoor and outdoor lighting applications.

Our luminaires have been working smoothly for many years without compromising their performance in the different environment conditions, with their compact product dimensions that are optimized on a family basis and weight advantage. With the Prolit family and Gprona, which provide guarantee for a long-lasting use, you can meet the lighting requirements of transportation, high polygon poles, port ship loading and container storage fields and sites, perfectly. EAE luminaires, which provide the ideal solution for all outdoor floodlight applications, can make LED Retrofit gain possible.

As EAE Lighting, we will also continue to be a part of safe and sustainable environments today, as in the hundreds of projects with our innovative lighting solutions.

- ▶▶ PROLIT EFFECT
- ▶▶ PROLIT PLUS
- ▶▶ GPRONA





An aerial night view of a busy port. The foreground and middle ground are filled with numerous stacks of colorful shipping containers in shades of blue, red, green, and yellow. Several large gantry cranes are visible, their structures illuminated by warm yellow lights. In the background, a large body of water is visible, with a ship docked at a pier. The overall scene is a vibrant display of industrial activity at night.

**EAE**

LIGHTING



# PROLIT EFFECT

-30 °C +55 °C



## The most effective and lightest product in the global market

- LED luminaire, which is suitable for heavy industrial and port conditions
- Resistant against harsh conditions with IK10 high mechanical strength and silk-screened, tempered glass
- Maximum performance in the environments, where water and dust are available, with its IP66 Value
- Rich optical diversity selected by our team in accordance with the structure of port site
- A wide range of lumen and watt values from 420W to 770W and 56k lm to 102k lm
- Perfect solution for the hardest winter and summer conditions with -30°C / +55 °C ambient operating temperature
- Control and automation diversity with Dali, RF and 1-10V options
- 1 to 1 perfect replacement with 2000 W HIT lamps. Energy saving up to 60% with ON-OFF option and up to 75% with automation systems
- The most optimal solution for Port sites with life cycles exceeding 60,000 hours
- Suitable for special site solutions for special projects.
- High strength against vibrations.



### PROLIT EFFECT

420W - 770W  
56421lm - 102371lm

PMMA LENS  
13° / 22° / 57° / AS / OT



### PROLIT EFFECT MP

436W - 715W  
59252lm - 91500lm

PMMA LENS  
18° / 23° / 30° / 46° / 60° /  
90° / AS



-30°C +60°C



**PROLIT**  
**PLUS**

## It has been created for high performance.

- LED luminaire, which is suitable for heavy industrial and port conditions
- Resistant against harsh conditions with IK09 high mechanical strength and silk-screened, tempered glass
- Maximum performance in the environments, where water and dust are available, with its IP66 Value
- Rich optical diversity selected by our team in accordance with the structure of port site
- A wide range of lumen and watt values from 195W to 435W and 25k lm to 57k lm
- Perfect solution for the hardest winter and summer conditions with -30°C / +60 °C ambient operating temperature
- Control and automation diversity with Dali, RF and 1-10V options
- 1 to 1 perfect replacement with 1000 W HIT lamps. Energy saving up to 55% with ON-OFF option and up to 70% with automation systems
- The most optimal solution for Port sites with life cycles exceeding 60,000 hours
- Suitable for special site solutions for special projects.
- High strength against vibrations.



### **PROLIT** **PLUS MP**

275W - 435W  
35351lm - 58706lm

PMMA LENS  
23° / 30° / 46° / 60° / 90° / AS



### **PROLIT** **PLUS NG**

195W - 400W  
25300lm - 51000lm

PMMA LENS  
16° / 27° / 52° / 98° / AS



### **PROLIT** **PLUS**

195W - 854W  
26000lm - 110000lm

PMMA LENS  
16° / 27° / 52° / 98° / AS

# GPRONA

-25 °C +50 °C



## The best choice from the asymmetric point of view

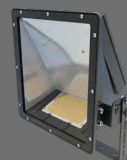
- LED luminaire, which is suitable for heavy industrial and port conditions
- Resistant against harsh conditions with IK09 high mechanical strength and tempered glass
- Maximum performance in the environments, where water and dust are available, with its IP66 Value
- Perfect solution in the port sites with special asymmetric curve
- A wide range of lumen and watt values from 135W to 463W and 21444 lm to 74200 lm
- Perfect solution for the hardest winter and summer conditions with -25 °C / + 50 °C ambient operating temperature
- Control and automation diversity with Dali, RF and 1-10V options
- 1 to 1 perfect replacement with 1000 W HIT lamps.
- Energy saving up to 67% with ON-OFF option and up to 80% with automation systems
- Suitable for special site solutions for special projects
- High strength against vibrations.



### GPRONA

135W / 157W / 290W / 364W / 463W  
21444lm / 24865lm / 57148 lm /  
57148lm / 74000 lm

DALI / 1-10V / DIMKO / RF option



### GPRONA MINI

133W / 156W / 185W  
21800 lm / 25400 lm / 29400 lm

DALI / 1-10V / DIMKO / RF option



**EAE**

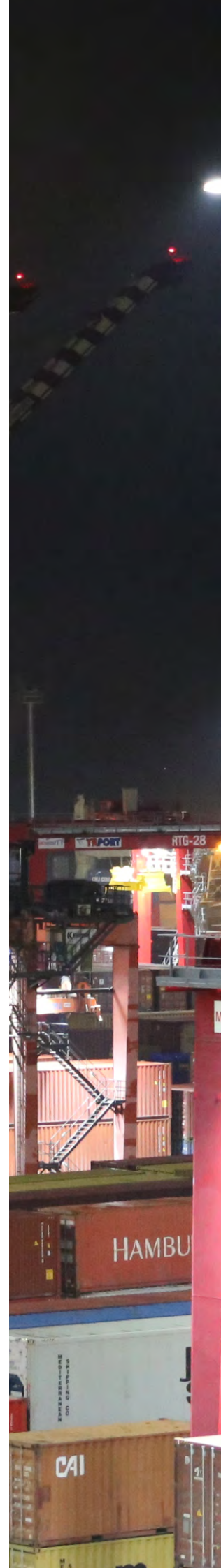
LIGHTING



# RTG CRANE AREAS

RTG Crane areas consist of the sections, where loading and container storage areas, especially transportation areas in the operation fields, are located. Comfortable working environment in these areas can only happen with appropriate luminaire selections intended for the needs. As EAE Lighting, we offer the ideal solution with our lighting solutions in accordance with world standards.

- ▶▶ PROLIT PLUS
- ▶▶ PROLIT V.3
- ▶▶ PROLIT KOMPAKT
- ▶▶ GALIS



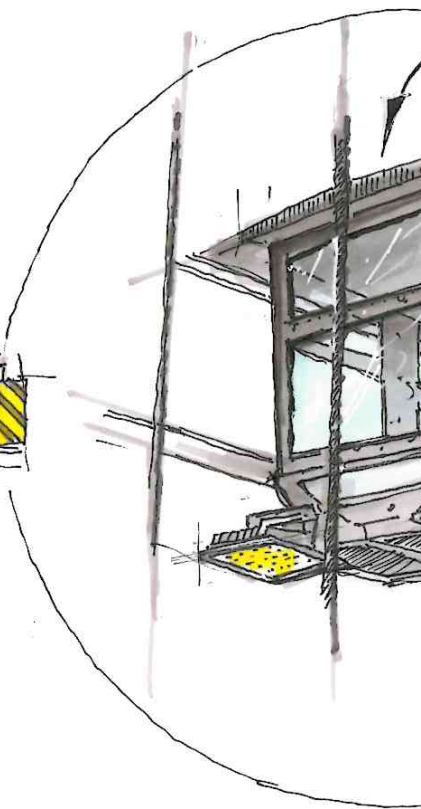
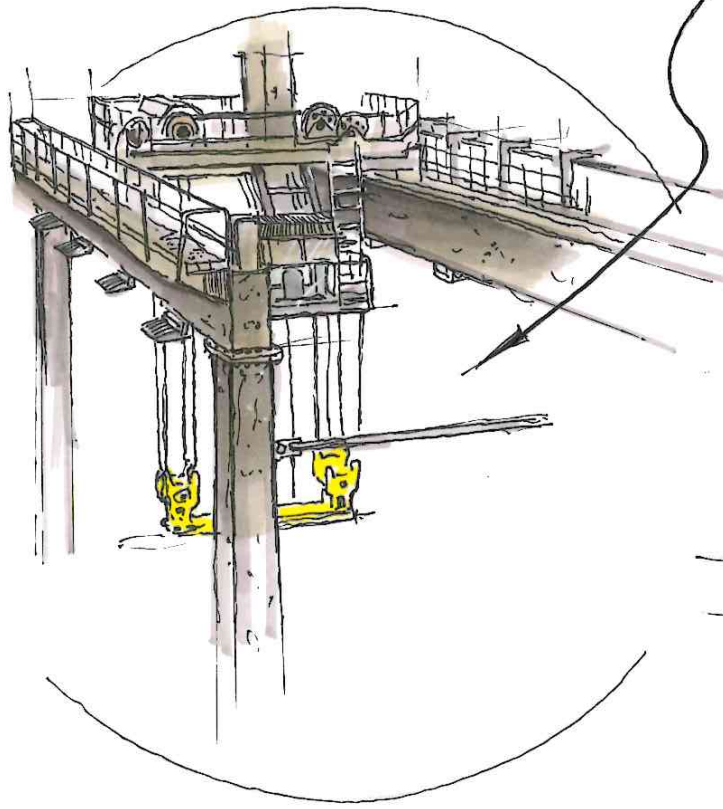
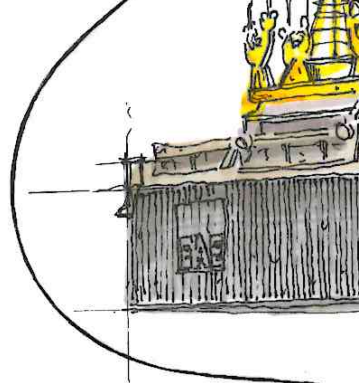
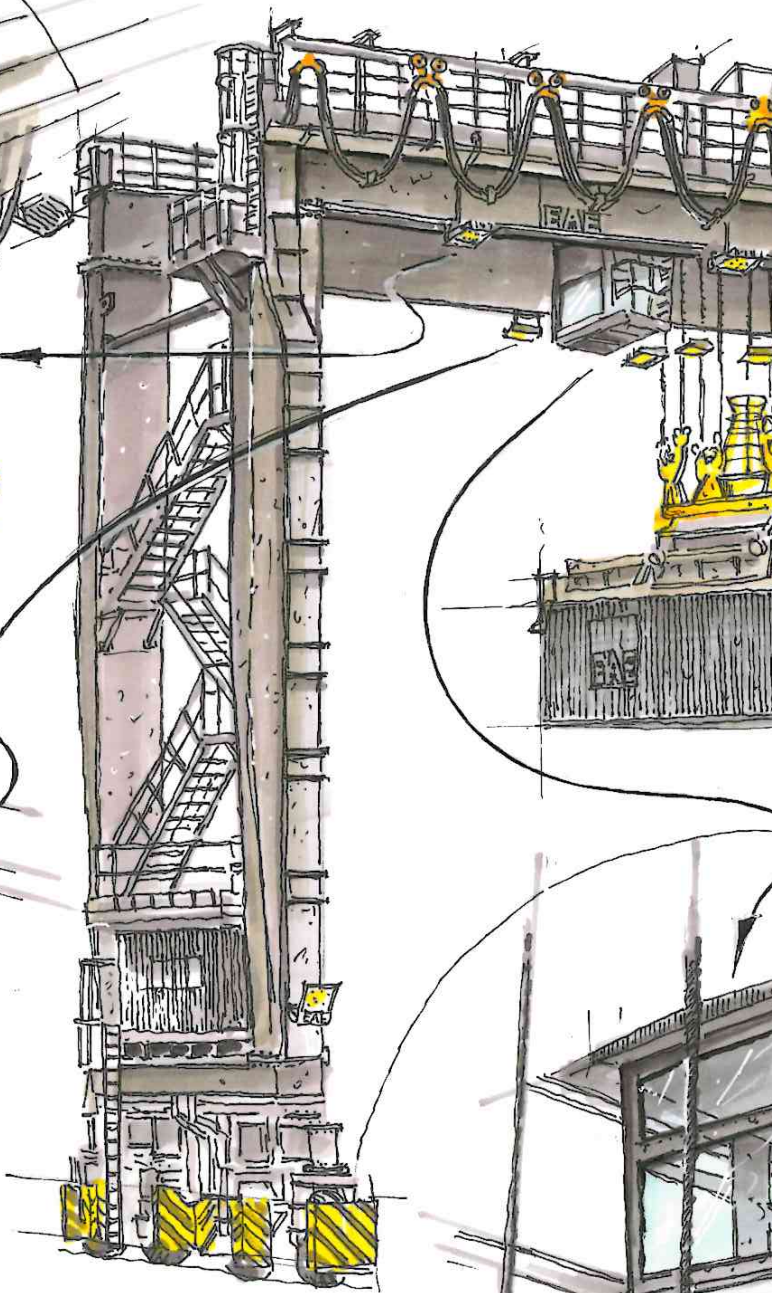
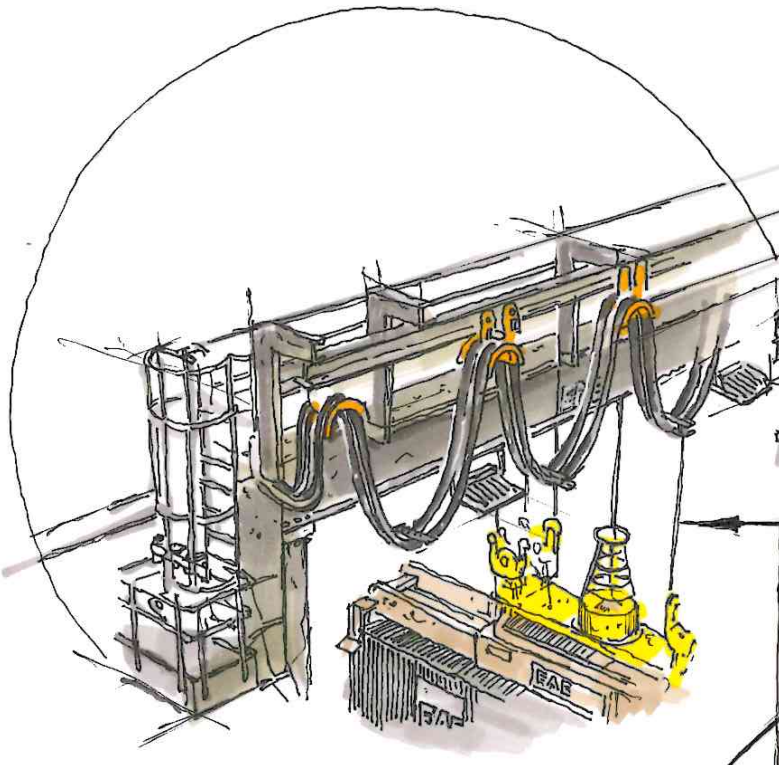


**EAE**

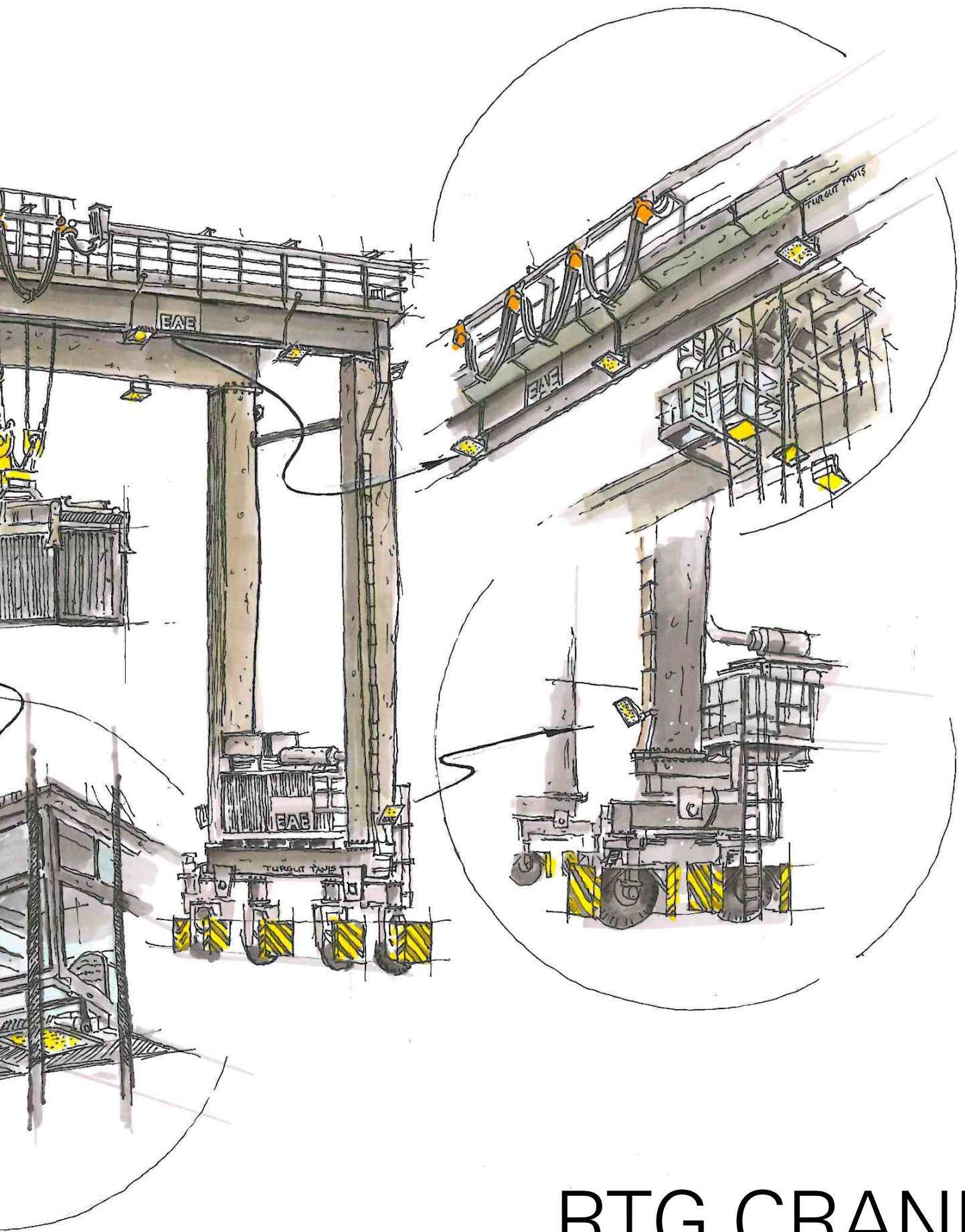
LIGHTING











# RTG CRANE AREAS

# PROLIT PLUS

-30°C +60°C



## It has been created for high performance.

- LED luminaire suitable for mobile equipment lighting
- Resistant against high vibration and impacts with IK09 high mechanical strength and silk-screened, tempered glass
- Maximum performance in the environments, where water and dust are available, with its IP66 Value
- Rich optical diversity selected by our team in accordance with crane structure and location
- A wide range of lumen and watt values from 202W to 435W and 26k lm to 57k lm
- Perfect solution for the hardest winter and summer conditions with -30°C / +60 °C ambient operating temperature
- Control and automation diversity with Dali, RF and 1-10V options
- 1 to 1 perfect replacement with 1000W HIT lamps. Energy saving up to 55% with ON-OFF option and up to 70% with automation systems
- The most optimal solution for mobile equipment with life cycles exceeding 60,000 hours
- Suitable for special site solutions for special projects.
- 1:1 replacement easiness in the current projects with special suspension systems.
- High strength against vibrations.



### PROLIT PLUS MP

275W - 435W  
35351lm - 58706lm

PMMA LENS  
23° / 30° / 46° / 60° / 90° / AS



### PROLIT PLUS NG

195W - 400W  
25300lm - 51000lm

PMMA LENS  
16° / 27° / 52° / 98° / AS



### PROLIT PLUS

195W - 854W  
26000lm - 110000lm

PMMA LENS  
16° / 27° / 52° / 98° / AS



-30°C +55°C

**PROLIT**  
V.3



## Perfect efficiency in the floodlight applications

- LED luminaire suitable for mobile equipment lighting
- Resistant against high vibration and impacts with IK09 high mechanical strength and silk-screened, tempered glass
- Maximum performance in the environments, where water and dust are available, with its IP66 Value
- Rich optical diversity selected by our team in accordance with crane structure and location
- A wide range from 94W to 230W and 13k lm to 28k lm
- -30°C- / +55°C ambient operating temperature
- Control and automation diversity with Dali, RF and 1-10V options
- 1 to 1 perfect replacement with 400 W HIT lamps. Energy saving up to 65% with ON-OFF option and up to 80% with automation systems
- The most optimal solution for mobile equipment with life cycles exceeding 60,000 hours
- Suitable for special site solutions for special projects.
- 1:1 replacement in the current projects with special suspension systems.
- High strength against vibrations.



### PROLIT V.3 MP

94W - 230W  
12494lm - 28166lm

PMMA LENS  
18° / 23° / 30° / 46° / 60° / 90° / AS

### PROLIT V.3

102W - 230W  
14879lm - 25355lm

PMMA LENS  
13° / 22° / 32° / 57° / 99° / OT / AS / SP

### PROLIT V.3 NG

100W - 200W  
12600lm - 22537lm

PMMA LENS  
10° / 16° / 27° / 52° / 98° / AS

# PROLIT KOMPAKT



-30°C +55°C



## Compact solution for port applications

- LED luminaire suitable for mobile equipment lighting
- Resistant against high vibration and impacts with IK08 high mechanical strength and silk-screened, tempered glass
- Maximum performance in the environments, where water and dust are available, with its IP66 Value
- Rich optical diversity selected by our team in accordance with crane structure and location
- A wide range of lumen and watt values from 70W to 124W and 8k lm to 12k lm
- Perfect solution for the hardest winter and summer conditions with -30°C / +55 °C ambient operating temperature
- Control and automation diversity with Dali, RF and 1-10V options
- 1 to 1 perfect replacement with 250 W HIT lamps. Energy saving up to 60% with ON-OFF option and up to 75% with automation systems
- The most optimal solution for mobile equipment with life cycles exceeding 60,000 hours
- Suitable for special site solutions for special projects.
- 1:1 replacement easiness in the current projects with special suspension systems.
- High strength against vibrations.



### PROLIT KOMPAKT

75W - 111W  
7371W - 14440lm

PMMA LENS  
16° / 27° / 52° / 98° / 99° /  
AS / SP



### PROLIT KOMPAKT MP

70W - 95W  
7625W - 11548lm

PMMA LENS  
18° / 23° / 35° / 46° / 60° /  
90° / AS

-25°C +55°C

# GALIS



## Maximum performance in the harsh conditions

- Reliable LED luminaire to illuminate mobile equipment paths.
- Resistant against high vibration and impacts with IK09 high mechanical strength, transparent and sanded glass options
- Maximum performance in the environments, where water and dust are available, with its IP66 - IP69 Value
- Single bushed and double bushed feeding options according to the structure of the mobile equipment
- Solution-oriented, high-efficiency lighting with different input voltage options
- Installation and application easiness with their 30cm-150cm lengths and special suspension systems
- 60% energy saving compared to their counterpart fluorescent lamps
- Resistant against vibrations.



### GALIS

19W - 68W  
2432lm - 9548lm  
(Transparent Glass)

19W - 68W  
1980lm - 7451lm  
(Sanded Glass)



### GALIS 24V

15W - 61W  
24 V OC  
2063lm - 7765lm  
(Transparent Glass)

15W - 61W  
24 V AC  
2063lm - 7765lm  
(Transparent Glass)

14W 24V AC / DC  
1400lm  
(Transparent Glass)



### GALIS Mini

10W - 50W  
1253lm - 5892lm  
(Transparent Glass)

10W - 36W  
929lm - 3924lm  
(Sanded Glass)



# SSG CRANE AREAS

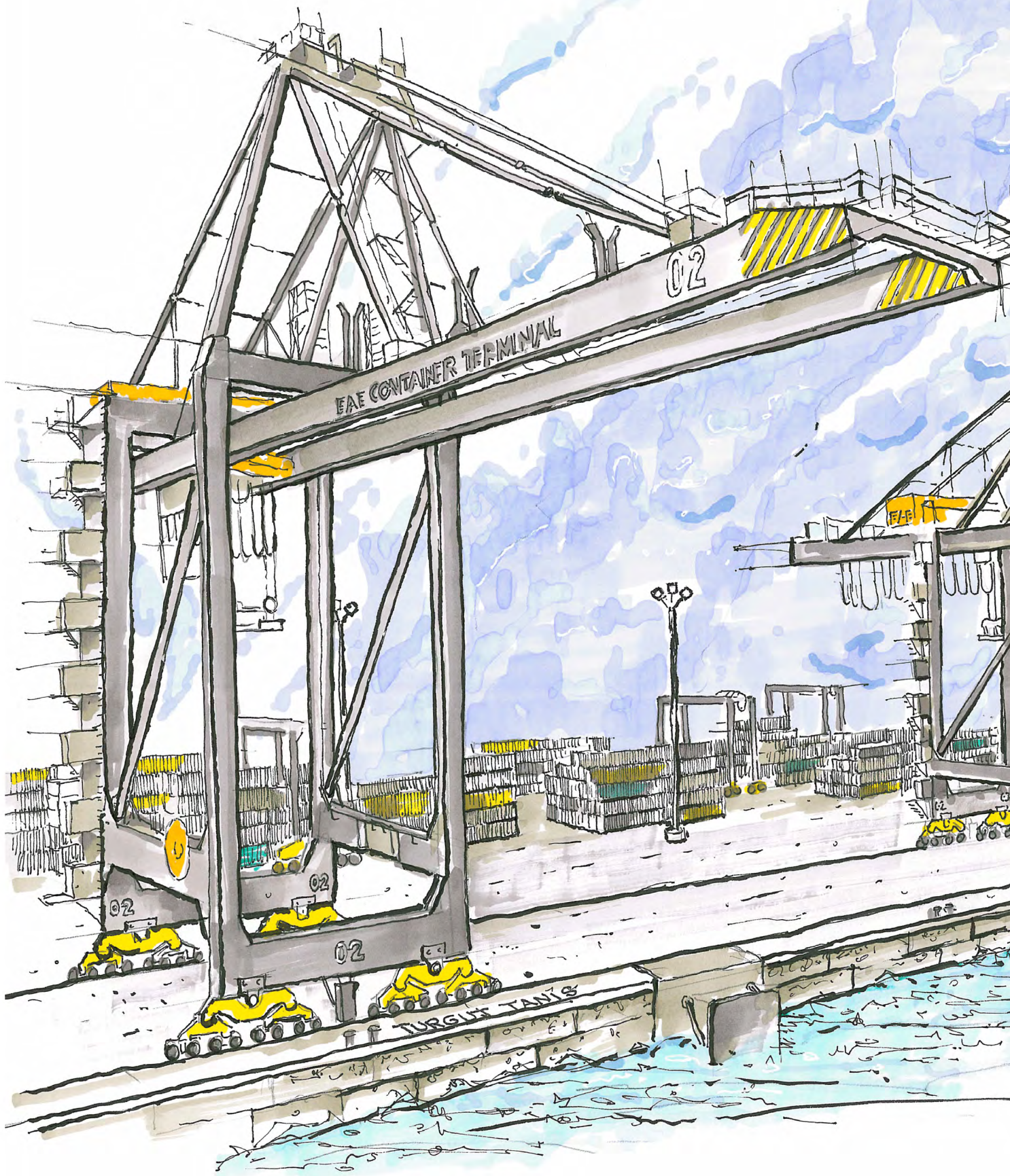
Accurate and effective illumination of SSG crane areas will maximally improve the visibility quality of the operator and employees. We offer safe lighting solutions for SSG crane areas with our LED luminaires, which are designed for stacking sites and under-crane working zones, where containers are transported.

- ▶▶ PROLIT PLUS
- ▶▶ PROLIT V.3
- ▶▶ PROLIT KOMPAKT
- ▶▶ GALIS













# SSG CRANE AREAS

# PROLIT PLUS

-30°C +60°C



## It has been created for high performance.

- LED luminaire suitable for mobile equipment lighting
- Resistant against high vibration and impacts with IK09 high mechanical strength and silk-screened, tempered glass
- Maximum performance in the environments, where water and dust are available, with its IP66 Value
- Rich optical diversity selected by our team in accordance with crane structure and location
- A wide range of lumen and watt values from 202W to 435W and 26k lm to 57k lm
- Perfect solution for the hardest winter and summer conditions with -30°C / +60 °C ambient operating temperature
- Control and automation diversity with Dali, RF and 1-10V options
- 1 to 1 perfect replacement with 1000 W HIT lamps. Energy saving up to 55% with ON-OFF option and up to 70% with automation systems
- The most optimal solution for mobile equipment with life cycles exceeding 60,000 hours
- Suitable for special site solutions for special projects.
- 1:1 replacement easiness in the current projects with special suspension systems.
- High strength against vibrations.



### PROLIT PLUS MP

275W - 435W  
35351lm - 58706lm

PMMA LENS  
23° / 30° / 46° / 60° / 90° / AS



### PROLIT PLUS NG

195W - 400W  
25300lm - 51000lm

PMMA LENS  
16° / 27° / 52° / 98° / AS



### PROLIT PLUS

195W - 854W  
26000lm - 110000lm

PMMA LENS  
16° / 27° / 52° / 98° / AS

-30°C +55°C

**PROLIT**  
V.3



## Perfect efficiency in the floodlight applications

- LED luminaire suitable for mobile equipment lighting
- Resistant against high vibration and impacts with IK09 high mechanical strength and silk-screened, tempered glass
- Maximum performance in the environments, where water and dust are available, with its IP66 Value
- Rich optical diversity selected by our team in accordance with crane structure and location
- A wide range from 94W to 230W and 13k lm to 28k lm
- -30°C / +55°C ambient operating temperature
- Control and automation diversity with Dali, RF and 1-10V options
- 1 to 1 perfect replacement with 400 W HIT lamps. Energy saving up to 65% with ON-OFF option and up to 80% with automation systems
- The most optimal solution for mobile equipment with life cycles exceeding 60,000 hours
- Suitable for special site solutions for special projects.
- 1:1 replacement in the current projects with special suspension systems.
- High strength against vibrations.



### PROLIT V.3 MP

94W - 230W  
12494lm - 28166lm

PMMA LENS  
18° / 23° / 30° / 46° / 60° / 90° / AS



### PROLIT V.3

102W - 230W  
14879lm - 25355lm

PMMA LENS  
13° / 22° / 32° / 57° / 99° / OT / AS / SP



### PROLIT V.3 NG

100W - 200W  
12600lm - 22537lm

PMMA LENS  
10° / 16° / 27° / 52° / 98° / AS



# PROLIT KOMPAKT



-30 °C +55 °C



## Compact solution for port applications

- LED luminaire suitable for mobile equipment lighting
- Resistant against high vibration and impacts with IK08 high mechanical strength and silk-screened, tempered glass
- Maximum performance in the environments, where water and dust are available, with its IP66 Value
- Rich optical diversity selected by our team in accordance with crane structure and location
- A wide range of lumen and watt values from 70W to 124W and 8k lm to 12k lm
- Perfect solution for the hardest winter and summer conditions with -30°C / +55 °C ambient operating temperature
- Control and automation diversity with Dali, RF and 1-10V options
- 1 to 1 perfect replacement with 250W HIT lamps. Energy saving up to 60% with ON-OFF option and up to 75% with automation systems
- The most optimal solution for mobile equipment with life cycles exceeding 60,000 hours
- Suitable for special site solutions for special projects.
- 1:1 replacement easiness in the current projects with special suspension systems.
- High strength against vibrations.



### PROLIT KOMPAKT

75W - 111W  
7371W - 14440lm

PMMA LENS  
16° / 27° / 52° / 98° / 99° /  
AS / SP



### PROLIT KOMPAKT MP

70W - 95W  
7625W - 11548lm

PMMA LENS  
18° / 23° / 35° / 46° / 60° /  
90° / AS

-25°C +55°C

# GALIS



## Maximum performance in the harsh conditions

- Reliable LED luminaire to illuminate mobile equipment paths.
- Resistant against high vibration and impacts with IK09 high mechanical strength, transparent and sanded glass options
- Maximum performance in the environments, where water and dust are available, with its IP66- IP69 Value
- Single bushed and double bushed feeding options according to the structure of the mobile equipment
- Solution-oriented, high-efficiency lighting with different input voltage options
- Installation and application easiness with their 30cm-150cm lengths and special suspension systems
- 60% energy saving compared to their counterpart fluorescent lamps
- Resistant against vibrations.



### GALIS

19W - 68W  
2432lm - 9548lm  
(Transparent Glass)

19W - 68W  
1980lm - 7451lm  
(Sanded Glass)

### GALIS 24V

15W - 61W  
24 V OC  
2063lm - 7765lm  
(Transparent Glass)

15W - 61W  
24 V AC  
2063lm - 7765lm  
(Transparent Glass)

14W 24V AC / DC  
1400lm  
(Transparent Glass)

### GALIS Mini

10W - 50W  
1253lm - 5892lm  
(Transparent Glass)

10W - 36W  
929lm - 3924lm  
(Sanded Glass)

# SHIPYARD AREAS

The shipyards consist of many different sites, including pool area lighting, welding repair sections and maintenance repair areas. Considering the height of the shipyard areas in today's world, it is very important to use high-performance products intended for the needs. With EAE solutions, which are developed with the state-of-the-art technology, you can achieve maximum performance in outdoor working fields.

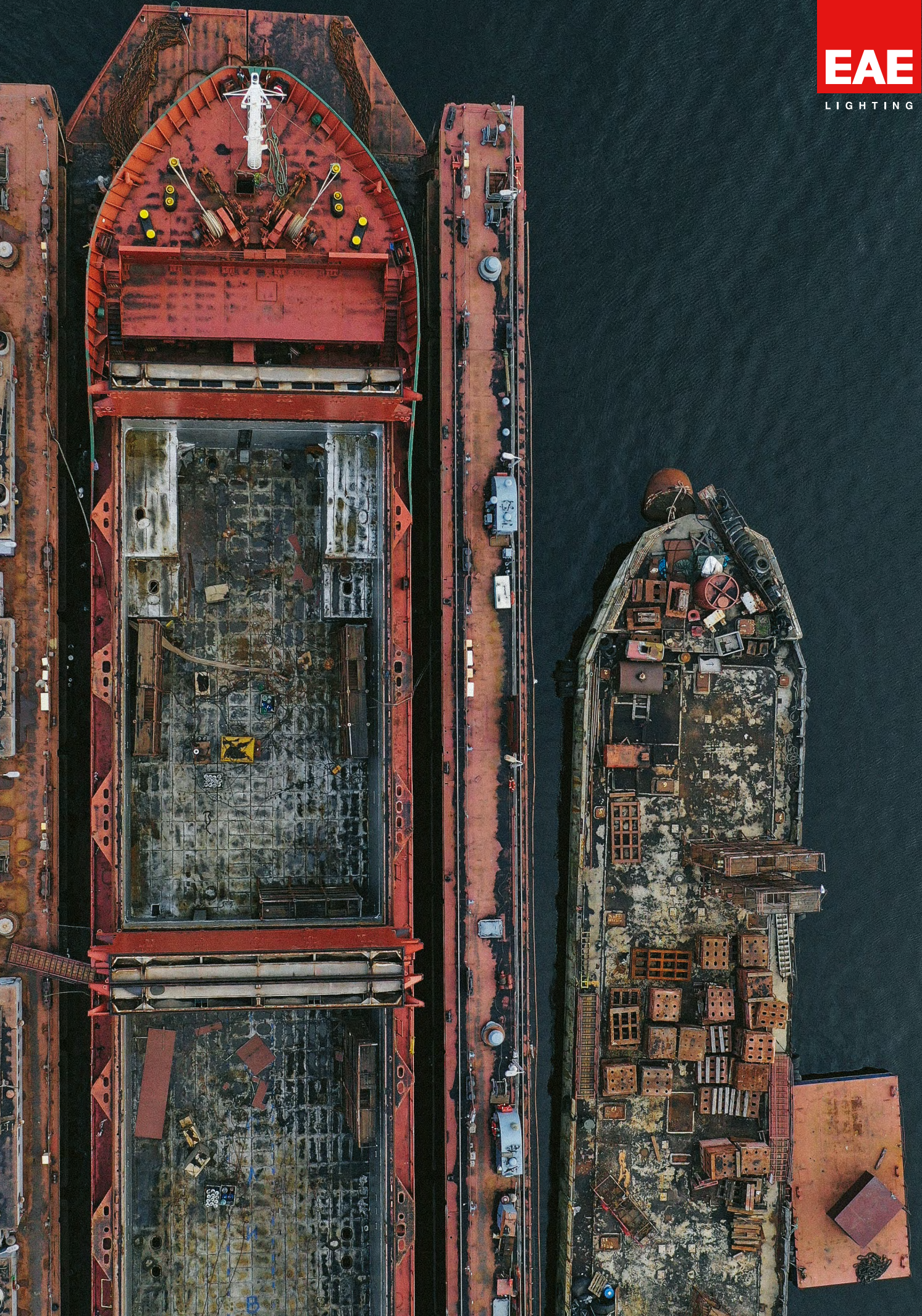
- ▶▶ PROLIT V.3
- ▶▶ PROLIT KOMPAKT
- ▶▶ GALIS





**EAE**

LIGHTING





# PROLIT

V.3

-30°C +55°C



## Perfect efficiency in the floodlight applications

- LED luminaire suitable for mobile equipment lighting
- Resistant against high vibration and impacts with IK09 high mechanical strength and silk-screened, tempered glass
- Maximum performance in the environments, where water and dust are available, with its IP66 Value
- Rich optical diversity selected by our team in accordance with crane structure and location
- A wide range from 94W to 230W and 13k lm to 28k lm
- -30°C / +55°C ambient operating temperature
- Control and automation diversity with Dali, RF and 1-10V options
- 1 to 1 perfect replacement with 400W HIT lamps. Energy saving up to 65% with ON-OFF option and up to 80% with automation systems
- The most optimal solution for mobile equipment with life cycles exceeding 60,000 hours
- Suitable for special site solutions for special projects.
- 1:1 replacement in the current projects with special suspension systems.
- High strength against vibrations.



### PROLIT V.3 MP

134W - 230W  
1200lm - 27600lm

PMMA LENS  
18° / 23° / 30° / 46° / 60° / 90° / AS



### PROLIT V.3

102W - 230W  
14879lm - 28306lm

PMMA LENS  
13° / 22° / 32° / 57° / 99° / OT / AS / SP



### PROLIT V.3 NG

95W - 200W  
12600lm - 22800lm

PMMA LENS  
10° / 16° / 27° / 52° / 98° / AS

-30°C +55°C

**PROLIT**  
**KOMPAKT**



## Compact solution for port applications

- LED luminaire suitable for mobile equipment lighting
- Resistant against high vibration and impacts with IK08 high mechanical strength and silk-screened, tempered glass
- Maximum performance in the environments, where water and dust are available, with its IP66 Value
- Rich optical diversity selected by our team in accordance with crane structure and location
- A wide range of lumen and watt values from 70W to 124W and 8k lm to 12k lm
- Perfect solution for the hardest winter and summer conditions with -30°C / +55 °C ambient operating temperature
- Control and automation diversity with Dali, RF and 1-10V options
- 1 to 1 perfect replacement with 250W HIT lamps. Energy saving up to 60% with ON-OFF option and up to 75% with automation systems
- The most optimal solution for mobile equipment with life cycles exceeding 60,000 hours
- Suitable for special site solutions for special projects.
- 1:1 replacement easiness in the current projects with special suspension systems.
- High strength against vibrations.



### **PROLIT** **KOMPAKT**

75W - 111W  
7371W - 14440lm

PMMA LENS  
16° / 27° / 52° / 98° / 99° /  
AS / SP

### **PROLIT** **KOMPAKT MP**

70W - 95W  
7625W - 11548lm

PMMA LENS  
18° / 23° / 35° / 46° / 60° /  
90° / AS

### **PROLIT** **KOMPAKT 24V**

34W - 53W - 79 W  
24 V AC/DC  
3700lm - 8600lm

34W - 24V AC  
3738 LM - 3811 LM

34W - 24V DC  
3741 LM - 3826 LM

27 - 52 - 99 - AS LENS TYPES



# GALIS

-25°C +55°C



## Maximum performance under challenging conditions

- Reliable LED luminaire to illuminate mobile equipment paths.
- Resistant against high vibration and impacts with IK09 high mechanical strength, transparent and sanded glass options
- Maximum performance in the environments, where water and dust are available, with its IP66 Value
- Single bushed and double bushed feeding options according to the region of use
- Solution-oriented, high-efficiency lighting with different input voltage options
- Installation and application easiness with their 10cm-150cm lengths and special suspension systems
- 60% energy saving compared to their counterpart fluorescent lamps
- Resistant against vibrations.



### GALIS

19W - 68W  
2432lm - 9548lm  
(Transparent Glass)

19W - 68W  
1980lm - 7451lm  
(Sanded Glass)



### GALIS 24V

15W - 61W  
24 V OC  
2063lm - 7765lm  
(Transparent Glass)

15W - 61W  
24 V AC  
2063lm - 7765lm  
(Transparent Glass)

14W 24V AC / DC  
1400lm  
(Transparent Glass)



### GALIS Mini

10W - 50W  
1253lm - 5892lm  
(Transparent Glass)

10W - 36W  
929lm - 3924lm  
(Sanded Glass)



**EAE**

LIGHTING





# OTHER SOLUTIONS

Solutions, which are among the highest requirements in port and shipyard sites, are very important for site lighting. As EAE Lighting, we make it effortless to provide an effective lighting performance throughout the entire operation process with our special solutions that we offer in different sections, such as container and crane structures.

- ▶▶ SPR CRANE
- ▶▶ REVOLED - X
- ▶▶ HBC
- ▶▶ RA 1 - 2 - 3







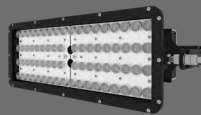
**EAE**

LIGHTING

## Maximum performance under challenging conditions



- Aluminium housing with high mechanical strength
- Maximum performance in the environments, where water and dust are available, with its IP66 Value
- Optimized, single, dual and triple modular use
- Functional use in the port and outdoor applications with special hanger set
- Long-lasting use with its life cycle exceeding 60,500 hours
- -25 °C / +45 °C ambient operating temperature

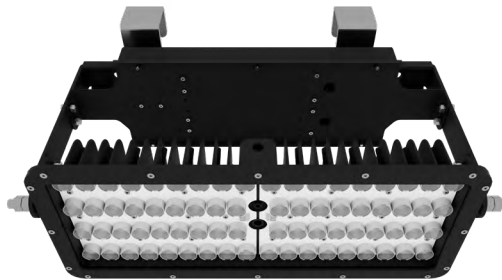
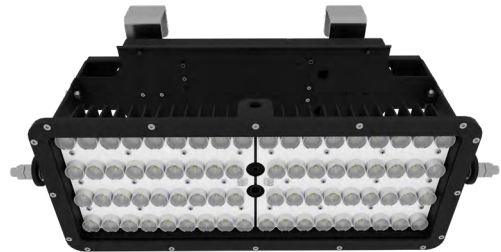
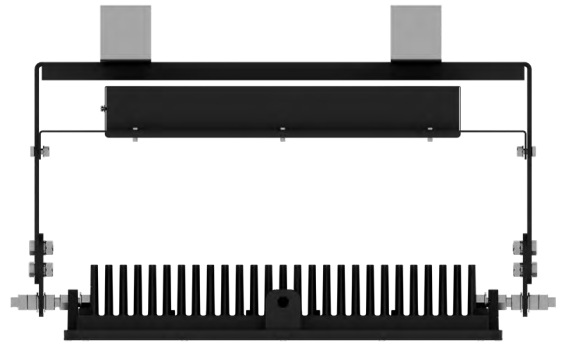


**SPR**  
**CRANE**

348W - 144lm/w  
20° / 35° / 60°

## SPR CRANE

- SPR CRANE provides an effective lighting performance during the entire operation process, where load intake is started and transportation is carried out, thanks to mobile hanger set on the cranes in the port sites.





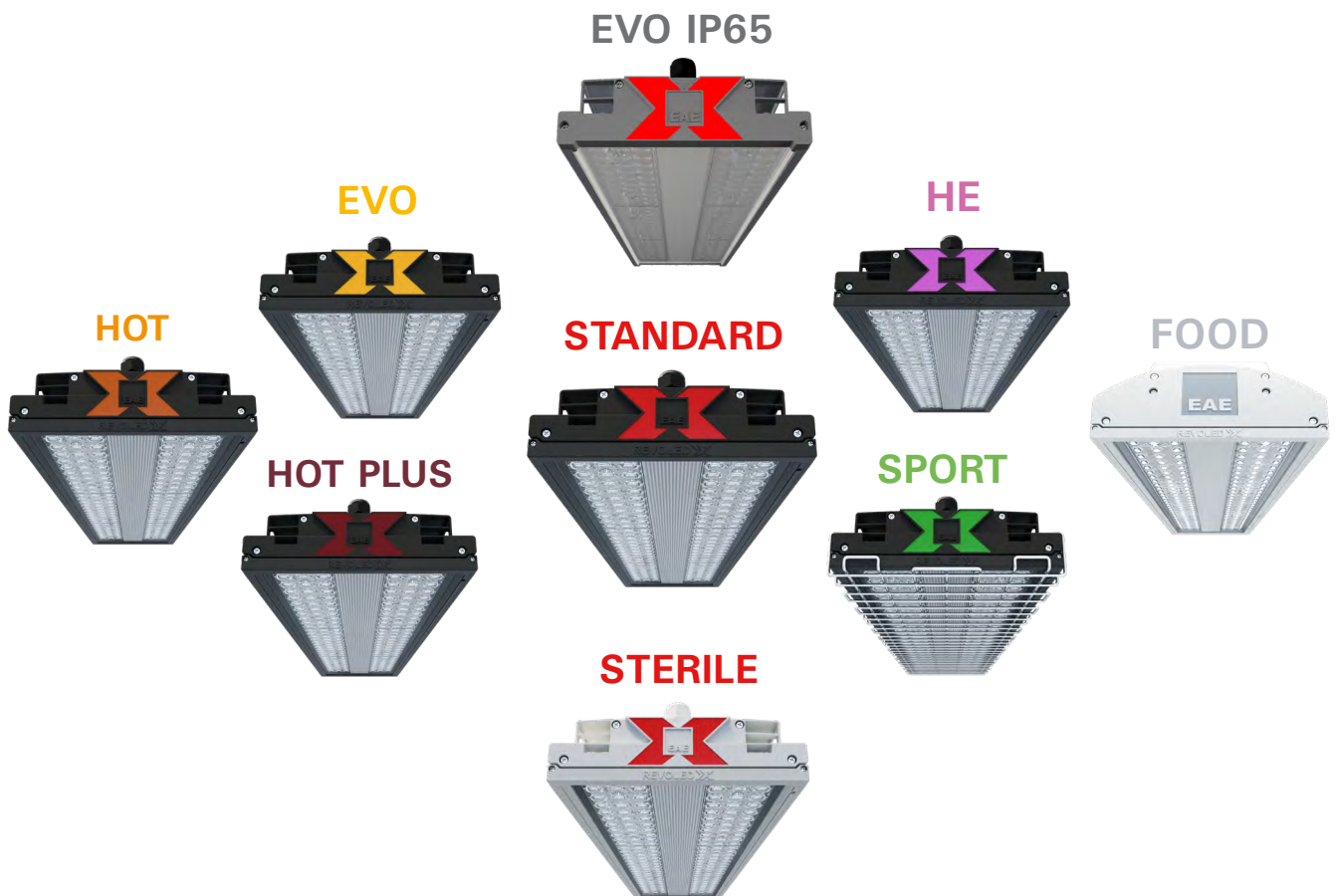
# REVOLED-X

-30°C +70°C



## Experience performance at the highest level

- Ambient operating temperature up to +70°C
- 3865lm - 43600lm output range
- Up to 171 lm/W efficiency
- 30°x 90° / 30° / 60° / 90° / AS / DA / 25x105°
- 7 different beam angle options
- Cable tray / Busbar / Angled wall / Seismic
- 1H - 3H EMG KIT / DALI - RF wireless control options





## REVOLED-X

28W - 128W  
4163lm - 21078lm

30°x90° / 30° / 60° / 90° /  
AS / DA / 25x105°



## REVOLED-X HE

26W - 117W  
4080lm - 20566lm

30°x90° / 30° / 60° / 90° /  
AS / DA / 25x105°



## REVOLED-X EVO

67W - 338W  
9008lm - 44226lm

30°x90° / 30° / 60° / 90° /  
AS / DA / 25x105°



## REVOLED-X EVO IP65

67W - 338W  
9008lm - 44226lm

30°x90° / 30° / 60° / 90° /  
AS / DA / 25x105°



## REVOLED-X HOT / HOT PLUS

28W - 128W  
4294lm - 21078lm

30° / 60° / 90°



## REVOLED-X SPORT

28W - 337W  
4294lm - 42102lm

30°x90° / 30° / 60° / 90° /  
AS / DA / 25x105°



## REVOLED-X STERIL

28W - 128W  
4294lm - 21078lm

30°x90° / 30° / 60° / 90° /  
AS / DA / 25x105°



## REVOLED-X FOOD

28W - 128W  
4294lm - 21078lm

30°x90° / 30° / 60° / 90° /  
AS / DA / 25x105°



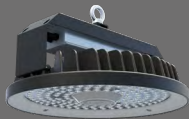
# HBC

-20°C +60°C



## Functional and efficient lighting

- High-performance LED luminaire
- 79W- 220W power consumption range
- Open front model/glass model options
- Different optical options
- Single point / Cable tray / Busbar suspension setting options
- 1 hour - 3 hours EMG KIT / 1-10V - DALI control option



### HBC Lens

79W – 220W  
9860lm - 26980lm

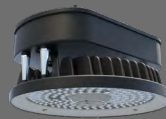
60° / 90°



### HBC Lens + Glass

79W – 179W  
8957lm - 24600lm

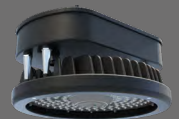
60° / 90°



### HBC Lens + Emergency Kit

79W – 206W  
9860lm - 25800lm

60° / 90°



### HBC Lens + Glass Emergency Kit

79W – 155W  
8957lm - 18616lm

60° / 90°

-40°C +60°C

RA / RA2 / RA3



## Powerful area lighting

- High-performance LED luminaire
- Long-lasting and easy installation
- 3.6k lm - 27.7k lm output range / 25W - 218W power consumption range
- DALI / RF wireless system compatibility
- Class I and Class II option
- Smart light control system with DIMKO



### RA

25W – 58W  
3558lm - 7962lm

PMMA LENS  
100° / 110° / Wide angle /  
Extra Wide angle / OT

RF Wireless and DALI /1-10V  
+ Dimko control option

### RA 2

30W – 116W  
3637lm - 16906lm

PMMA LENS  
100° / 110° / Wide angle /  
Extra Wide angle / OT

RF Wireless and DALI /1-10V  
+ Dimko control option

### RA 3

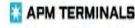
103W - 218W  
15300lm - 27700lm

PMMA LENS  
100° / 110° / Wide angle /  
Extra Wide angle / OT

RF Wireless and DALI /1-10V  
+ Dimko control option



# REFERENCES





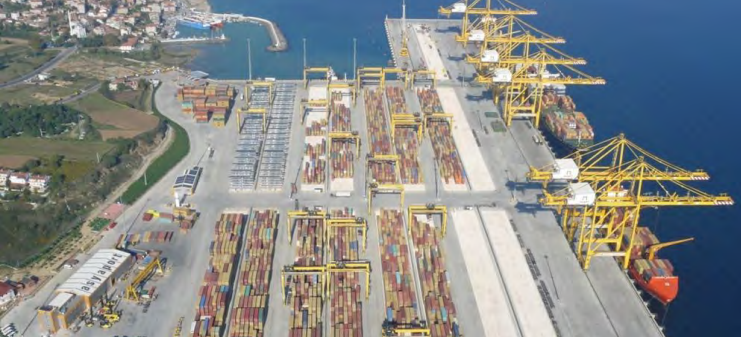
**EAE**

LIGHTING





# REFERENCES



## **Asyaport Container Station**

Tekirdağ / Türkiye

2014 - 2018 - 2020 New project

300.000 m<sup>2</sup> Outdoor space

G-Prona / Prolit / Megalit



## **Evyaport İntermodal Station**

Kocaeli / Türkiye

2015 - 2018 - 2020

100.000 m<sup>2</sup> Outdoor space

40.000 m<sup>2</sup> indoor space

Prolit / G-prona / Sround



## **Çelebi Bandırma İntermodal Station**

Bandırma / Türkiye

2015 New project

268.348 m<sup>2</sup> Outdoor space

350.000 container capacity annually

Prolit / G-prona



## **Safiport İntermodal Station**

Kocaeli / Türkiye

2018 New project

200.000 m<sup>2</sup> Outdoor space

40.000 m<sup>2</sup> Indoor space

Sporna / Prolit / G-prona / Sround

# REFERENCES



## Yılport Container Station

Gebze / Türkiye

2019 new project

1.000.000 container capacity annually

Prolit Plus / G-prona / Sround Crane RF / Arktos / PRM



## APM Intermodal Station

Rotherdam / Netherlands

2015 - 2019 - 2020 New projects

100.000 m<sup>2</sup> Outdoor space

Prolit / Galis / T-Bar / D-Bar



## Assanport intermodal Station

İskenderun / Türkiye

2017 - 2018 New project

127.850 m<sup>2</sup> Outdoor space

2000 m<sup>2</sup> Indoor space

Prolit / G-Prona / Megalit / Arktos



## Gemport Station

Gemlik / Türkiye

2019 new project

1.000.000 container capacity annually

2000 m<sup>2</sup> Indoor space

G-Prona / Prolit Plus / Arktos / Sround Crane RF



# REFERENCES



## Solventaş Liquid Discharge Station

Dilovası / Türkiye

2019 new project

4.020.000 m<sup>3</sup> liquid capacity annually

G-Prona / Prolit Plus / Arktos / Sround Crane RF



## Roda Port Container Station

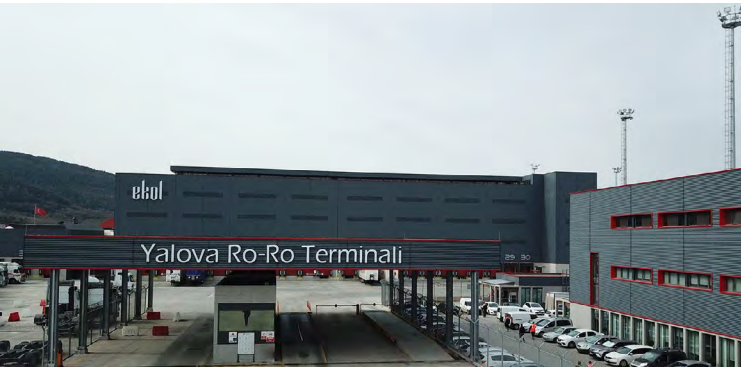
Gemlik / Türkiye

2019 new project

110.000 m<sup>2</sup> Outdoor space

200.000 container capacity annually

G-Prona / Prolit Plus / Prolit



## Ro-Ro Port

Yalova / Türkiye

2019 new project

80.000 m<sup>2</sup> Outdoor space

G-Prona / Arktos / Megalit



## İÇDAŞ

Çanakkale / Türkiye

2017 - 2018 New project

80.000 m<sup>2</sup> Outdoor space

G-Prona / Megalit

# REFERENCES



## **Alport Kargo - Container Station**

Conakry / Guinea

2017 new project

500.000 m<sup>2</sup> Outdoor space

Prolit / G-Prona / Arktos



# PORT SOLUTIONS



**EAE LIGHTING Inc.**  
Ikitelli Organize Sanayi Bölgesi  
Eski Turgut Ozal Caddesi No:20  
Basaksehir / ISTANBUL - TURKEY  
Tel : +90 212 413 21 00 (pbx)  
Fax : +90 212 549 37 90  
[www.eaelighting.com](http://www.eaelighting.com)

*engineering the light*

EAE Lighting-Brochure **PORT SOLUTIONS** - EN - Updating Date: 25/01/2024  
The EAE has the right to make any appropriate changes it deems necessary without prior notice.  
Please contact us with regard to the details of the information in the catalogue.