



Ex-Proof Lighting







Our innovative lighting solutions, integrated with smart control systems, we have developed so far and presented on the market ensured the creation of efficient, safe environments in harmony with environment. In an era where the possibilities offered by the light and light-based technologies constantly and rapidly change, we acknowledge the vital role that lighting plays in every field involving people and nature.





What is a Zone?

It is the analysis of the risk and the classification of the zone based on the level of risk in the facilities where explosive, flammable or combustible materials are produced and/or distributed.

It is examined in two separate categories:

- 1 - Zone Classification According to Gas Groups
(Zone 0, Zone 1, Zone 2)
- 2- Zone Classification According to Dust Groups
(Zone 20, Zone 21, Zone 22)

How to Identify a Zone?

Zone classification is performed based on type production specified in the IEC EN 60079-10-1 (Gas) and IEC EN 60079-10-2 (Dust) directives.

Definitions of Zones

- Zone 0 : Areas where explosive gas is present continuously, for long periods or frequently
- Zone 1 : Areas where explosive gas is likely to occur
- Zone 2 : Areas where explosive gas occurs rarely or for a short time
- Zone 20 : Areas where explosive dust is present continuously, for long periods or frequently
- Zone 21 : Areas where explosive dust is likely to occur
- Zone 22 : Areas where explosive dust occurs rarely or for a short time

Note: Zone 0 products are suitable for use in Zone 1 and Zone 2. Zone 1 products are suitable for use in Zone 2. Zone 2 products may only be used in Zone 2. Zone 20 products are suitable for use in Zone 21 and Zone 22. Zone 21 products are suitable for use in Zone 22. Zone 22 products may only be used in Zone 22.

What Is Protection Type?

Indicates the flame-proof enclosure type of the device to be used in the zone. There are many types of enclosures, depending on the specifications of the device.

How to Choose a Protection Type?

You can choose the most suitable protection type for your facility among the enclosure types specified in the IEC EN 60079-0 directive for Zone classification. Moreover, you can learn the content and scope of the directives issued for these types.



What Is an Explosion Group?

It is the determination and classification of the type of explosive, flammable or combustible material produced and/or transferred within the facility.

It is examined in two separate categories:

- 1-Gas Groups (IIA, IIB, IIC)
- 2-Dust Groups (IIIA, IIIB, IIIC)

Explosion Group

Typical Types of Gas and Dust

- IIA : Methane, Ethane, Propane, Butane, Octane, Fuel Oil
- IIB : Acrylic nitrile, ethylene, ethylene oxide
- IIC : Hydrogen, acetylene, carbon disulphide

- IIA : Insulating Powders (Plastic, Cereals, etc.)
- IIB : Semiconducting Powders (Silicone, Zinc, etc.)
- IIC : Conducting Powders (Copper, Iron, Aluminium, etc.)

Note: Equipment in group IIB also provide protection against equipment in group IIA. Equipment in group IIC also provide protection against equipment in group IIA and IIB. Equipment in group IIIB also provide protection against equipment in group IIIA. Equipment in group IIC also provide protection against equipment in group IIA and IIB.

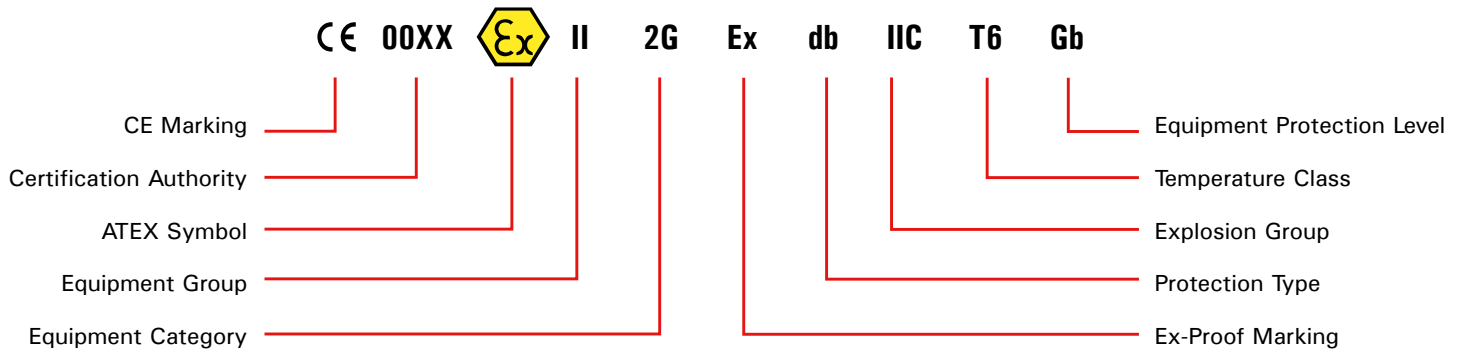
What Is a Temperature Class?

Indicates maximum surface temperature that can occur on the equipment. The determined temperature class should not approach the determined value at a critical level since it is the most important factor triggering the explosion of the liquid, gas or dust material in the area.

Definitions of Temperature Classes

- T1 : Maximum surface temperature is lower than 450 °C
- T2 : Maximum surface temperature is lower than 300 °C
- T3 : Maximum surface temperature is lower than 200 °C
- T4 : Maximum surface temperature is lower than 135 °C
- T5 : Maximum surface temperature is lower than 100 °C
- T6 : Maximum surface temperature is lower than 85 °C

INFORMATION FOR READING A LABEL



COMMON SOLUTION FOR DIFFERENT SECTORS



Zone-1 (Gas) Zone-21 (Dust)

Content



■ EX-LINE MINI



■ EX-FOR MINI



■ HBC-ZONE 1

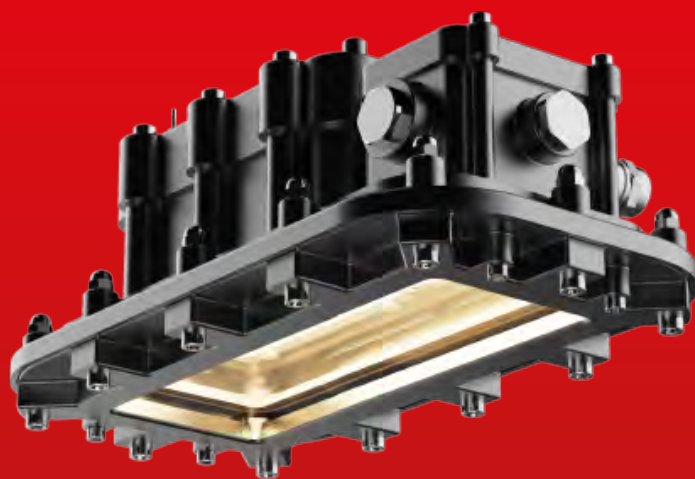


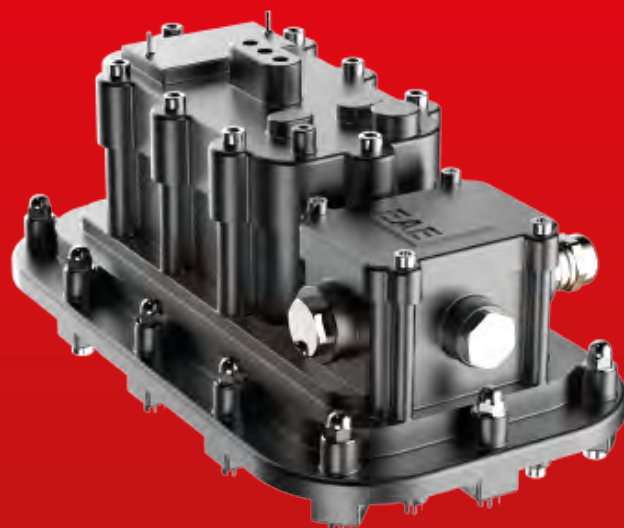
■ PROLIT-ZONE 1



■ EX-FLEX

EX-LINE MINI





EX-LINE MINI

With its advanced mechanical features, the EX-LINE MINI stands out with its durable and sealed aluminium injection housing. Guaranteeing a long service life in harsh environmental conditions, this product provides a colour temperature option and high lighting efficiency with its MID POWER LED. EX-LINE MINI also provides economy with its low consumption costs. With different mounting options and the DALI option, it is suitable for explosive atmospheres with ambient temperatures ranging from -40 °C to +45 °C.



Exproof Product Features

Zone : Zone 1.21 / 2.21 / 2.22
 Group / Category : II / 2GD
 Protection Class : db eb tb
 Explosion Group : IIC / IIIC
 Maximum Surface Temperature Class : T6 / T85°
 Certificate Code : EX II 2G Ex db eb IIC T6 Gb
 EX II 2D Ex tb IIIC T85°C Gb

Mechanical Features

Body : Aluminium Extrusion Housing
 Luminaire Surface : Thermal Tempered Glass
 Sealing : High Temperature Resistant Silicone Gasket and TPV Gasket
 Gland (Inlet) : Std. 1 x ISO M20
 Support Tools : AISI 316L Stainless Steel
 Screws and bolts : AISI 316L Stainless Steel
 IP : IP66

Electrical and Optical Properties

Light Source : MID POWER LED
 Consumption Power : 20W / 28W / 36W / 44W / 51W / 57W
 Lumen : 2695 lm / 3689 lm / 4660 lm / 5610 lm / 6353 lm / 7090 lm
 Input Voltage : 220-240V (50-60 Hz)
 Colour Temperature : 2000K / 2700K / 3000K / 4000K / 5000K / 5700K / 6500K
 CRI : > 80
 Optical : Obtuse Angle

Other Features

Support Type : Ceiling, Cable Tray, Pole, Chain Support
 Housing Colour : SW 306G (SMOKE-COLOURED)

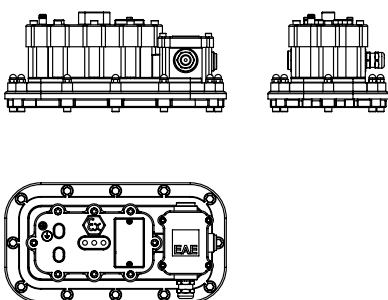
Options

Gland Inlet : ISO M16, ISO M25
 Gland Outlet : ISO M16, ISO M20, ISO M25
 Protection Grid : Yes
 DALI : Yes

Dimensions

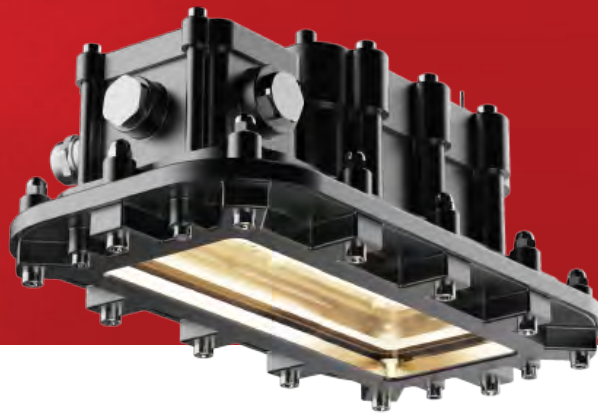
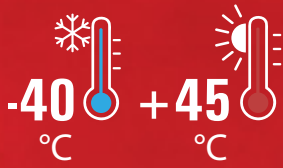
Width : 223 mm
 Height : 217 mm

Technical Drawing



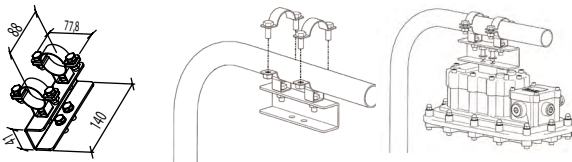
Order Chart

Order No.	Product Code	Power Consumption (W)	Weight (KG)
3244059	LIN 0200 40EX00 2K60 66 V.MN	20	5,2
3244060	LIN 0280 40EX00 3K60 66 V.MN	28	5,2
3244061	LIN 0360 40EX00 4K60 66 V.MN	36	5,2
3244062	LIN 0440 40EX00 5K60 66 V.MN	44	5,2
3244063	LIN 0510 40EX00 6K3 66 V.MN	51	5,2
3240195	LIN 0570 40EX00 7K0 66 V.MN	57	5,2



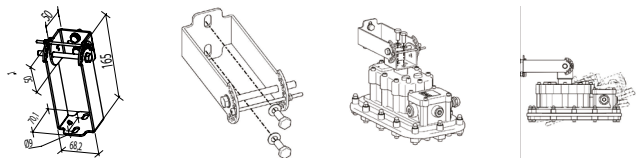
Support Tools

Tube Installation



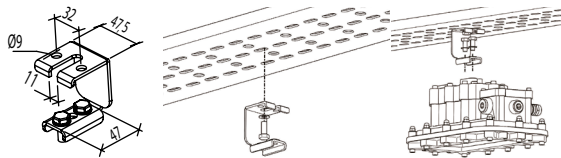
Order Code : 3244500
Product Code : LIN MN TUBE INST. SUPPORT SET (31-38MM)

Wall Installation - Installation with Angular Support



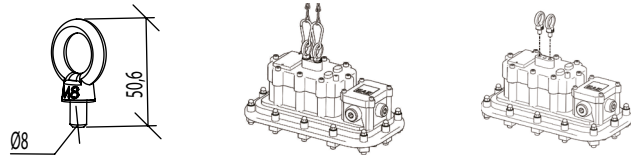
Order Code : 3244499
Product Code : LIN MN ANGULAR CEILING TRAY WALL SUPPORT SET

Ceiling and Cable Tray Single Installation - 1



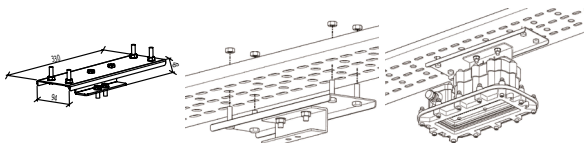
Order Code : 3244478
Product Code : LIN CABLE TRAY AND CEILING SUPPORT SET

Chain Support Installation



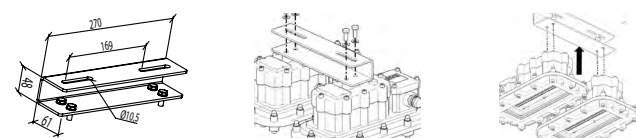
Order Code : 3244480
Product Code : LIN PENDANT SUPPORT SET

Ceiling and Cable Tray Single Installation - 2



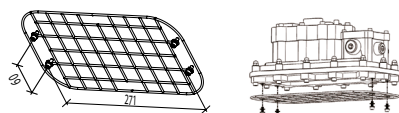
Order Code : 3244505
Product Code : LIN MN EX HORIZONTAL CEILING TRAY INST. SUPPORT SET

Ceiling and Cable Tray Double Installation



Order Code : 3244501
Product Code : LIN MN LNR CEILING TRAY INST. SUPPORT SET

Optional Wire Grid



Order Code : 3244142
Product Code : LIN WIRE CAGE INSTALLATION SET



Zone 1.21 / 2.21 / 2.22

II 2G Ex db eb IIC T6 Gb
II 2D Ex tc IIIC T85°C Db

EX-FOR MINI





EX-FOR MINI

With its advanced mechanical features, the EX-FOR MINI stands out with its durable and sealed aluminium injection housing. Guaranteeing a long service life in harsh environmental conditions, this product provides a colour temperature option and high lighting efficiency. EX-FOR MINI also provides economy with its low consumption costs in the gooseneck mounted fields. Product can be supply short return of investment times at refineries. With different mounting options and the DALI option, it is suitable for explosive atmospheres with ambient temperatures ranging from -40 °C to +45 °C.



Exproof Product Features

Zone : Zone 1.21 / 2.21 / 2.22
 Group / Category : II / 2GD
 Protection Class : db tb
 Explosion Group : IIC / IIIC
 Maximum Surface Temperature Class : T6 / T85°
 Certificate Code : EX II 2G Ex db IIC T6 Gb
 EX II 2D Ex tb IIIC T85°C Db

Mechanical Features

Body : Aluminium Injection Housing
 Luminaire Surface : Thermal Tempered Glass
 Sealing : High Temperature Resistant Silicone Gasket
 Gland (Inlet) : Std. 1 x ISO M20
 Support Tools : AISI 316L Stainless Steel
 Screws and bolts : AISI 316L Stainless Steel
 IP : IP66

Electrical and Optical Properties

Light Source : MID POWER LED
 Consumption Power : 20W / 28W / 36W / 44W / 51W
 Lumen : 2387 lm / 3267 lm / 4126 lm / 4890 lm / 5540 lm
 Input Voltage : 220-240V (50-60 Hz)
 Colour Temperature : 3000K / 4000K / 5000K / 5700K / 6500K
 CRI : > 80
 Optical : Wide

Other Features

Support Type : Ceiling, Cable Tray, Pole, Chain Support
 Housing Colour : SW 306G (SMOKE-COLOURED)

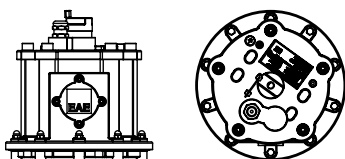
Options

Gland Inlet : Direct M25 , ISO M16, ISO M25, NPT 3/4" (Optional)
 Gland Outlet : ISO M16, ISO M20, ISO M25
 Protection Grid : Yes
 DALI : Yes

Dimensions

Width : 225 mm
 Height : 221 mm

Technical Drawing



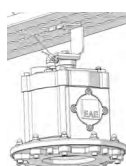
Order Chart

Order No.	Product Code	Power Consumption (W)	Weight (KG)
3244080	FOR 0200 40EX00 2K3 66 V.M	20	5,5
3244079	FOR 0280 40EX00 3K2 66 V.M	28	5,5
3244078	FOR 0360 40EX00 4K1 66 V.MN	36	5,5
3244077	FOR 0440 40EX00 4K9 66 V.MN	44	5,5
3244070	FOR 0510 40EX00 5K5 66 V.MN	51	5,5



Support Tools

EX-FOR MINI Cable Tray Hanger Kit



Order Code : 3245131
 Product Code : EX FOR MINI CABLE TRAY HANGER KIT

EX-FOR MINI Gooseneck Pole Mounting



Order Code : 3244499
 Product Code : LIN MN ANGULAR CEILING TRAY WALL SUPPORT SET

EX-FOR MINI Eyebolt Single Hanger Kit



Order Code : 3245137
 Product Code : EX FOR MINI EYEBOLT SINGLE HANGER KIT

Ceiling and Cable Tray Single Installation - 2



Order Code : 3245782
 Product Code : EX FOR MINI DOUBLE HANGER KIT



Zone 1.21 / 2.21 / 2.22

II 2G Ex db IIC T6 Gb
 II 2D Ex tb IIIC T85°C Db

HBC-EX ZONE 1





HBC-EX ZONE 1

With its high resistance to explosion, HBC-EX ZONE 1 exhibits excellent performance against ignition in explosive gas atmosphere and explosive dust atmosphere. Offering long-lasting use in project areas, HBC-EX ZONE-1 is the common solution of different industries that need lighting.



Exproof Product Features

Zone : Zone 1.21 / 2.21 / 2.22
 Group / Category : II / 2GD
 Protection Class : 2GD
 Explosion Group : IIC / IIIC
 Maximum Surface Temperature Class : T6 / T85°
 Certificate Code : EX db eb mb IIC T6 Gb
 EX tb IIIC T85°C Db

Electrical and Optical Properties

Light Source : LED
 Consumption Power : 70W / 107W / 130W
 Lumen : 8400 lm / 12100 lm / 15100 lm
 Input Voltage : 220-240V (50-60 Hz)
 Colour Temperature : 4000K / 5000K / 6500K
 CRI : > 80
 Optical : Obtuse Angle

Other Features

Support Type : Ceiling Installation
 Housing Colour : Grey Polyester

Dimensions

Width : 225 mm
 Height : 221 mm
 Weight : 11 kg

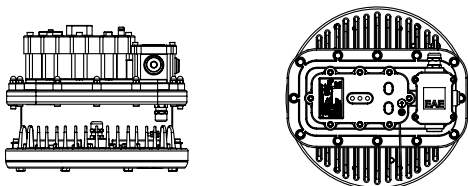
Mechanical Features

Body : Aluminium Injection Housing
 Luminaire Surface : Glass with Screen Printing
 Sealing : Temperature Resistant Silicone Gasket
 Gland (Inlet) : 1xM20 or 1xM25 (armored cable included)
 Gland (Outlet) : 1xM20 or 1xM25 (armored cable included)
 Support Tools : Pendant, Pipe, Ceiling, Cable Tray, Angular
 Screws and bolts : Stainless Steel
 IP : IP66

Options

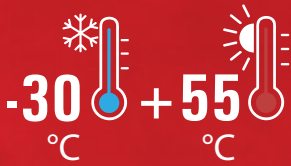
Emergency Kit : Yes (1-3 Hours)
 DALI : Yes

Technical Drawing



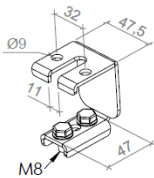
Order Chart

Order No.	Product Code	Power Consumption (W)	Weight (KG)
3254978	HBC 070U 50EX00 110 8K4 Z1	70	10,1
3254979	HBC 070U 50EX01 110 8K4 Z1	70	10,1
3254980	HBC 070U 50EX02 110 8K4 Z1	70	10,1
3254983	HBC 070U 50EX03 110 8K4 Z1	70	10,1
3254984	HBC 070U 50EX04 110 8K4 Z1	70	10,1
3254386	HBC 070U 50EX05 110 8K4 Z1	70	10,1
3254977	HBC 107U 50EX00 110 12K1 Z1	107	10,5
3254982	HBC 107U 50EX03 110 12K1 Z1	107	10,5
3254969	HBC 130U 50EX00 110 15K1 Z1	130	10,9
3254981	HBC 130U 50EX03 110 15K1 Z1	130	10,9



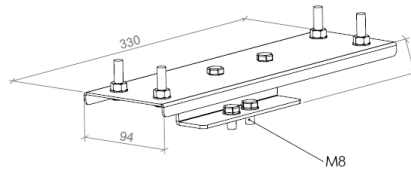
Support Tools

Cable Tray



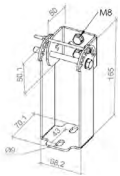
Order Code : 3244478
 Product Code : LIN CABLE TRAY AND SUPPORT SET

Flush Ceiling Wall Suspension Set



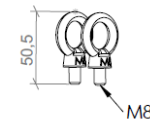
Order Code : 3245127
 Product Code : LIN MN EX FLUSH CEILING INST. SUPPORT SET

Angular Ceiling Tray Wall Set



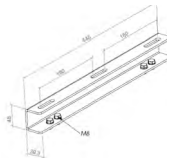
Order Code : 3244499
 Product Code : LIN MN ANGULAR CEILING TRAY WALL SUPPORT SET

Flush Ceiling Wall Suspension Set



Order Code : 3244480
 Product Code : LIN PENDANT SUPPORT SET

Dual Product Hanging Set



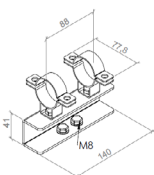
Order Code : 3244501
 Product Code : DUAL PRODUCT LENGTHWISE HANGING SET

Box Profile Hanging Set



Order Code : 3287129
 Product Code : BOX PROFILE HANGING SET

Pipe Assembly Suspension Set



Order Code : 3244500
 Product Code : LIN MN TUBE INST. SUPPORT SET

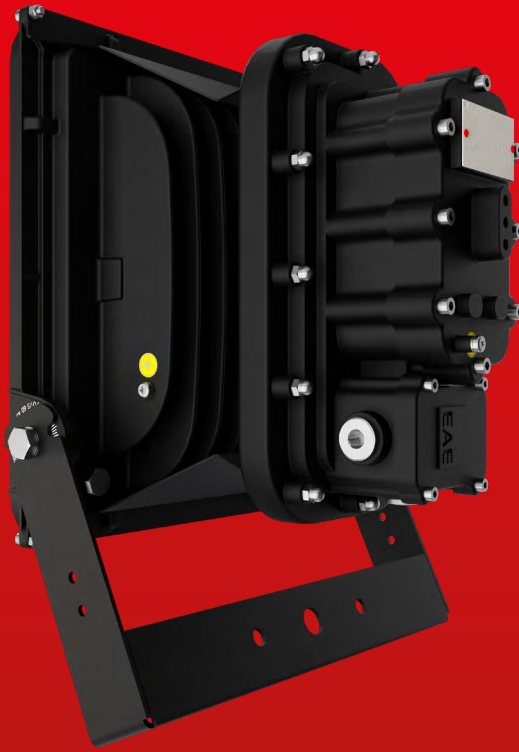


Zone 1.21 / 2.21 / 2.22

Ex db eb mb IIC T6 Gb
 Ex tb IIIC T85°C Db

PROLIT ZONE 1





PROLIT ZONE 1

PROLIT ZONE 1 provides a flexible usage area with its IP66 aluminum injection body with high heat and impact resistance and electronic control options in its class. In addition, the product, which has an e-type energy input terminal, provides an economical installation with its easy installation.



Exproof Product Features

Zone : Zone 1.21 / 2.21 / 2.22
Group / Category : II / 2GD
Protection Class : 2GD
Explosion Group : IIC / IIIC
Maximum Surface
Temperature Class : T6 / T85°
Certificate Code : EX db mb IIC T6 Gb
EX tb IIIC T85°C Db

Electrical and Optical Properties

Light Source : LED
Consumption Power : 70W / 107W / 130W
Lumen : 8400 lm / 12100 lm / 15100 lm
Input Voltage : 220-240V (50-60 Hz)
Colour Temperature : 2700K / 3000K / 4000K / 5000K /
5700K / 6500K
CRI : >80
Optical : Obtuse Angle

Other Features

Support Type : Ceiling Installation
Housing Colour : Grey Polyester

Dimensions

Width : 365 mm
Height : 449 mm
Weight : 10,1 - 10,9 kg

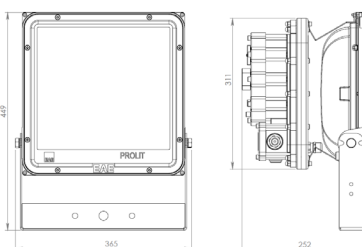
Mechanical Features

Body : Aluminium Injection
Luminaire Surface : Glass with Screen Printing
Sealing : Temperature Resistant Silicone Gasket
Gland (Inlet) : 1xM20 or 1xM25 (armored cable included)
Gland (Outlet) : 1xM20 or 1xM25 (armored cable included)
Support Tools : Ceiling, Pole
Screws and bolts : Stainless Steel
IP : IP66

Options

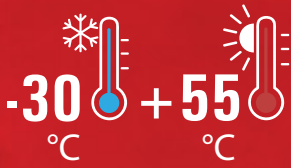
Emergency Kit : Yes (1-3 Hours)
DALI : Yes

Technical Drawing



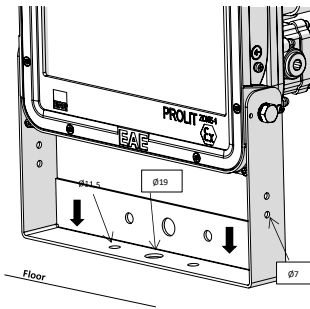
Order Chart

Order No.	Product Code	Power Consumption (W)	Weight (KG)
3290640	PRL 070Z 40EX00 110 8K4 Z1	70	10,1
3290646	PRL 107Z 40EX00 110 12K1 Z1	107	10,5
3290648	PRL 130Z 40EX00 110 15K1 Z1	130	10,5

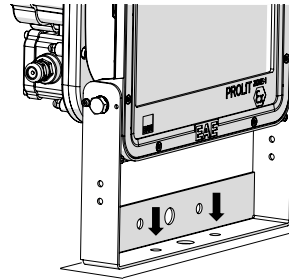


Support Tools

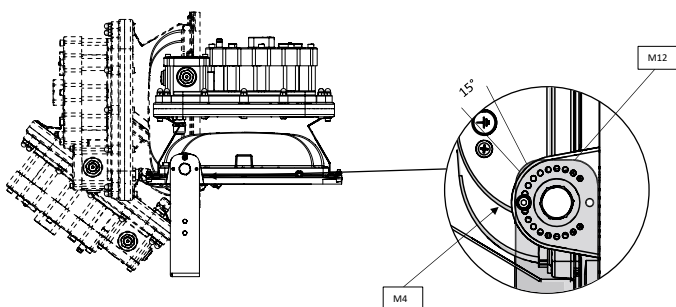
Floor Assembly



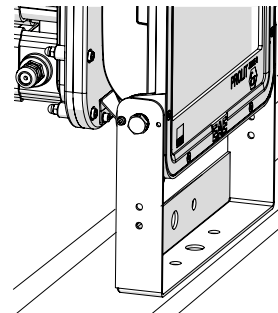
Box Profile Assembly



Adjustable Angle Hanger Kit



Angle Assembly



Zone 1.21 / 2.21 / 2.22

Ex db eb mb IIC T6 Gb
Ex tb IIIC T85°C Db

EX-FLEX





EX-FLEX

Offering a multi-functional solution for emergency lighting and escape lighting issues, EX FLEX is suitable for explosive areas at ambient temperatures from -20 °C to +50 °C, in Zone 1.21 / 2.21 / 2.22 that require durability with its high-strength housing. Guaranteeing long-lasting use for harsh environmental conditions with its emergency kit option, EX FLEX minimizes possible lighting problems.



Exproof Product Features

Zone : Zone 1.21 / 2.21 / 2.22
Group / Category : II / 2G / II 2D
Protection Class : db eb tb
Explosion Group : IIC / IIIC
Maximum Surface Temperature Class : T6 / T80°
Certificate Code : EX db eb IIC T6 Gb
EX tb IIIC T80°C Db

Mechanical Features

Body : Aluminium Dust Painted Housing
Luminaire Surface : Borosilicate Glass Tube
Sealing : Temperature Resistant Silicone Gasket
Gland (Inlet) : 2x M20
Gland (Outlet) : 2x M20
Support Tools : Pendant, Pipe, Wall, Ceiling
Screws and bolts : Stainless Steel
IP : IP66

Electrical and Optical Properties

Light Source : LED
Consumption Power : 4W
Lumen : 204 lm
Input Voltage : 220-240V (50-60 Hz)
Colour Temperature : 4000K
CRI : > 80
Optical : Obtuse Angle

Other Features

Support Type : Ceiling Installation
Housing Colour : Grey Polyester

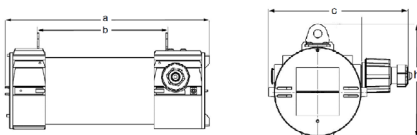
Options

Emergency Kit : Yes (1-3 Hours)

Dimensions

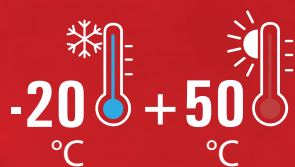
Width : 220 mm
Length : 370 mm
Height : 174 mm
Weight : 4 Kg

Technical Drawing



Order Chart

Order No.	Product Code	Power Consumption (W)	Weight (KG)
3266114	FLE 005U 40EX02 202 66 ZONE-1	3,8	4



Support Tools

Pipe Installation

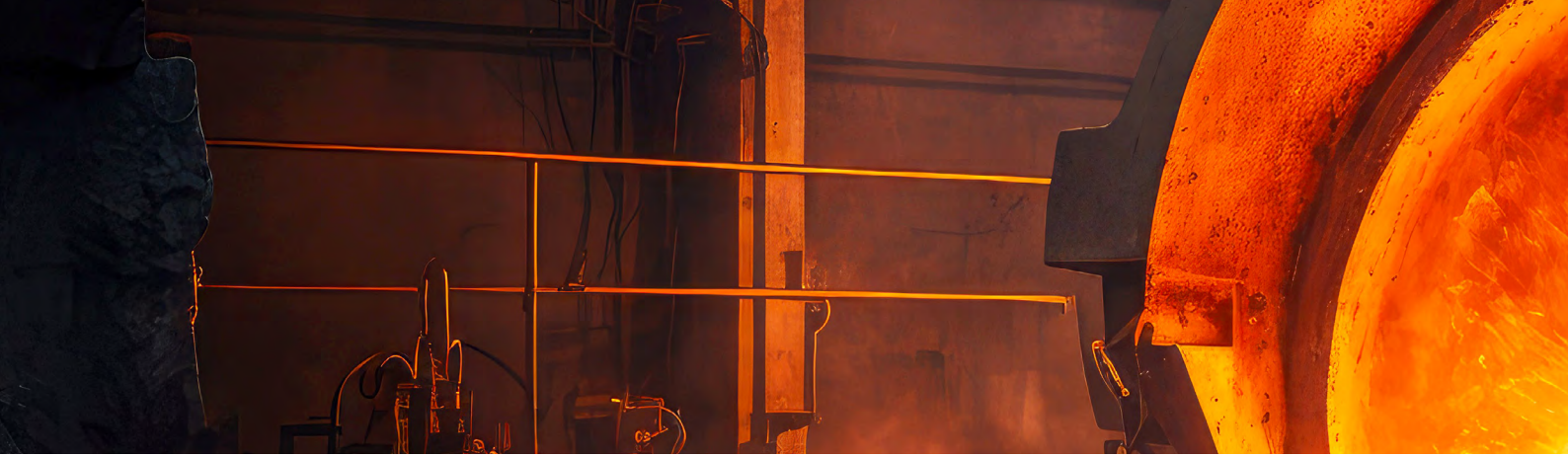


Ceiling Installation



Zone 1.21 / 2.21 / 2.22

Ex db IIC T6 Gb or
Ex db eb IIC T6 Gb
Ex tb IIIC T80°C Db



Content



■ PROLIT



■ PROLIT KOMPAKT
MID POWER LED



■ PROLIT KOMPAKT
POWER LED



■ HBC-EX ZONE 2



■ CSD



Zone-2 (Gas)
Zone-21 (Dust)
Zone-22 (Dust)



EX-COR ZONE 2



GALIS EXPROOF



EX - VYR



GALIS EXPROOF EXIT

PROLIT EXPROOF





PROLIT EXPROOF

Offering a long service life for years thanks to its sealed and durable housing, PROLIT provides benefits for various environment conditions with its alternative lens types. Providing different colour temperature options, PROLIT is offered to users with a wide range of lumen options. Providing high energy efficiency with its HIGH POWER LED, this product is also offered with IP66 protection class. PROLIT is heat and shock absorbent thanks to its high strength tempered glass. PROLIT is suitable for harsh ambient conditions with temperature ranging from -40 °C to +60 °C.



Exproof Product Features

Zone	: Zone 2.22
Group / Category	: II / 3GD
Protection Class	: ec / tc
Explosion Group	: IIC / IIIC
Maximum Surface Temperature Class	: T4 / T135°
Certificate Code	: EX II 3G Ex ec IIC T4 Gc EX II 3D Ex tc IIIC T135°C Dc

Electrical and Optical Properties

Light Source	: POWER LED
Consumption Power	: 102W / 132W / 150W / 176W / 206W
Lumen	: 14879 lm / 17334 lm / 19753 lm / 22585 lm / 25760 lm
Input Voltage	: 220-240V (50-60 Hz)
Colour Temperature	: 4000K
CRI	: > 80
Optical	: 22° / 32° / 57° / 99° / AS

Other Features

Support Type	: Ceiling, Cable Tray, Pole, Chain Support
Housing Colour	: MV 3004 (BLACK)

Dimensions

Width	: 336 mm
Length	: 476 mm
Height	: 173 mm

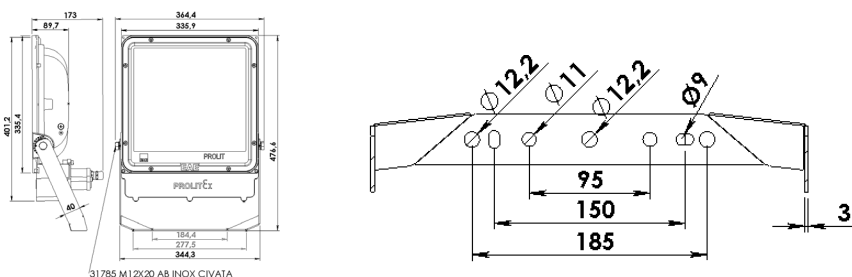
Mechanical Features

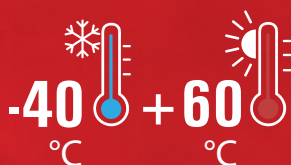
Body	: Aluminium Injection Housing
Luminaire Surface	: Thermal Tempered Glass
Sealing	: High Temperature Resistant Silicone Gasket
Gland (Inlet)	: 1 x ISO M20 and 1x ISO M25
Gland (Outlet)	: 1 x ISO M16 / 1 x ISO M20 / 1 x ISO M25
Support Tools	: AISI 316L Stainless Steel
Screws and bolts	: AISI 316L Stainless Steel
IP	: IP66

Options

Gland Inlet	: M25, M20, M16
Gland Outlet	: M25, M20, M16

Technical Drawing



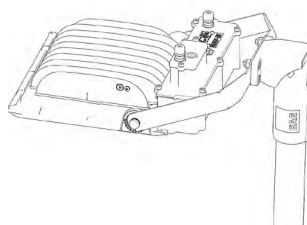


Order Chart

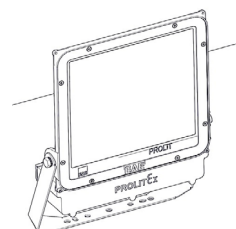
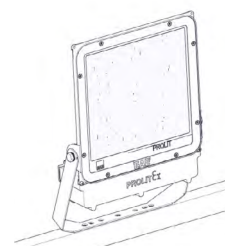
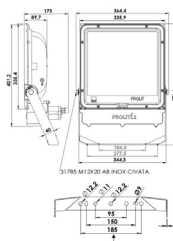
Order No.	Product Code	Power Consumption (W)	Weight (KG)
3177895	PRL 102Z 40EX00 22 14K9 OP2	102 W	9
3177896	PRL 102Z 40EX00 32 14K1 OP2	102 W	9
3177897	PRL 102Z 40EX00 57 14K6 OP2	102 W	9
3177898	PRL 102Z 40EX00 99 14K3 OP2	102 W	9
3177899	PRL 102Z 40EX00 AS 14K3 OP2	102 W	9
3207348	PRL 132Z 40EX00 22 17K3 OP2	132 W	9
3207349	PRL 132Z 40EX00 32 16K6 OP2	132 W	9
3207350	PRL 132Z 40EX00 57 17K1 OP2	132 W	9
3207351	PRL 132Z 40EX00 99 16K2 OP2	132 W	9
3207352	PRL 132Z 40EX00 AS 16K8 OP2	132 W	9
3177910	PRL 150Z 40EX00 22 19K8 OP2	150 W	9
3177911	PRL 150Z 40EX00 32 19K3 OP2	150 W	9
3177912	PRL 150Z 40EX00 57 19K4 OP2	150 W	9
3177913	PRL 150Z 40EX00 99 19K8 OP2	150 W	9
3177914	PRL 150Z 40EX00 AS 19K8 OP2	150 W	9
3177925	PRL 176Z 40EX00 22 22K6 OP2	176 W	9,1
3177926	PRL 176Z 40EX00 32 21K8 OP2	176 W	9,1
3177927	PRL 176Z 40EX00 57 22K1 OP2	176 W	9,1
3177928	PRL 176Z 40EX00 99 21K8 OP2	176 W	9,1
3177929	PRL 176Z 40EX00 AS 21K8 OP2	176 W	9,1
3177940	PRL 206Z 40EX00 22 25K8 OP2	206 W	9,2
3177941	PRL 206Z 40EX00 32 25K2 OP2	206 W	9,2
3177942	PRL 206Z 40EX00 57 25K2 OP2	206 W	9,2
3177943	PRL 206Z 40EX00 99 24K5 OP2	206 W	9,2
3177944	PRL 206Z 40EX00 AS 24K5 OP2	206 W	9,2

Support Tools

Pole Type Installation



Ceiling and Wall Installation



Zone 2.22

II 3G Ex ec IIC T4 Gc
II 3D Ex tc IIIC T135 Dc

PROLIT KOMPAKT MID POWER LED





PROLIT KOMPAKT MID POWER LED

Developed for Ex-Proof Zone 2.22 lighting, PROLIT KOMPAKT, exhibits excellent performance against heat and impacts with its extra resistant body against explosion and fire risk. In addition to its IP66 class resistant body, it captures the best light output thanks to its efficient LED. Especially designed for use in petrochemical, chemical production, shipbuilding, oil and gas industries. The product, which has ATEX and EAC certificates, meets the lighting needs in Zone 2.22 explosive environments in the best way.



Exproof Product Features

Zone	: Zone 2.22
Group / Category	: II / 3GD
Protection Class	: ec / tc
Explosion Group	: IIC / IIIC
Maximum Surface Temperature Class	: T4 / T135°
Certificate Code	: EX II 3G Ex ec IIC T4 Gc EX II 3D Ex tc IIIC T135°C Dc

Mechanical Features

Body	: Aluminium Injection Housing / Zone 2
Luminaire Surface	: Tempered Ground Glass
Sealing	: High Temperature Resistant Silicone Gasket
Gland (Inlet)	: Input std. 1 x ISO M16
Support Tools	: Internal Leg
Screws and bolts	: AISI 316L Stainless Steel
IP	: IP66

Electrical and Optical Properties

Light Source	: MID POWER LED
Consumption Power	: 43W / 49W / 70W / 95W
Lumen	: 6200 lm / 7000 lm / 7625 lm / 10767 lm
Input Voltage	: 220-240V (50-60 Hz)
Colour Temperature	: 3000K / 4000K / 5700K
CRI	: > 70
Optical	: 35° / 60° / 90°

Other Features

Support Type	: Ground Installation
Housing Colour	: MV 3004 (BLACK)

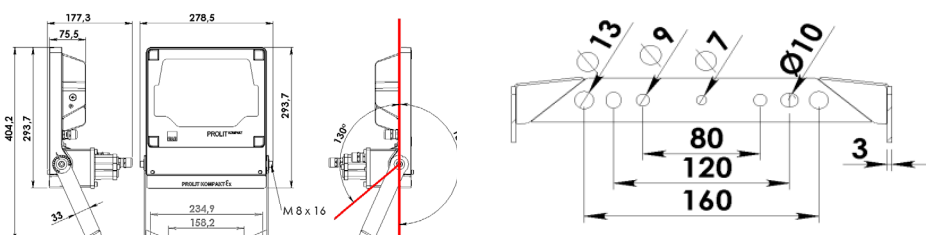
Options

Gland Inlet	: ISO M20, ISO M25
Gland Outlet	: ISO M16, ISO M20, ISO M25
DALI	: Yes

Dimensions

Width	: 279 mm
Length	: 294 mm
Height	: 177 mm

Technical Drawing



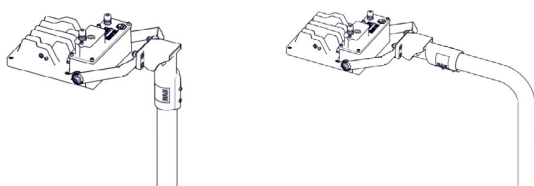


Order Chart

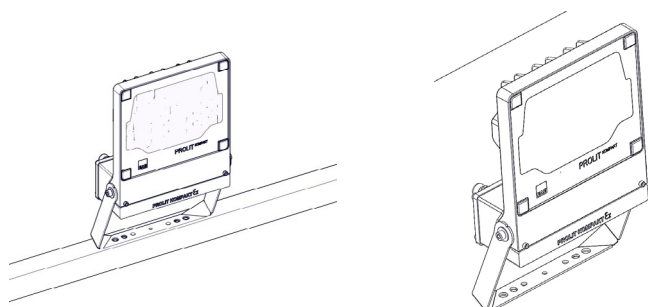
Order No.	Product Code	Power Consumption (W)	Weight (KG)
3207389	PRK 043Z 40EX00 35 6K2 V.3 MP	43	5,25
3207390	PRK 043Z 40EX00 60 6K2 V.3 MP	43	5,25
3207391	PRK 043Z 40EX00 90 6K2 V.3 MP	43	5,25
3207409	PRK 049Z 40EX00 35 7K0 V.3 MP	49	5,25
3207410	PRK 049Z 40EX00 60 7K0 V.3 MP	49	5,25
3207411	PRK 049Z 40EX00 90 7K0 V.3 MP	49	5,25
3184039	PRK 070Z 40EX00 35 7K70 V.3 MP	70	5,25
3184040	PRK 070Z 40EX00 60 7K90 V.3 MP	70	5,25
3184041	PRK 070Z 40EX00 90 8K20 V.3 MP	70	5,25
3184047	PRK 095Z 40EX00 35 10K8 V.3 MP	95	5,25
3184048	PRK 095Z 40EX00 60 11K4 V.3 MP	95	5,25
3184049	PRK 095Z 40EX00 90 11K0 V.3 MP	95	5,25

Support Tools

Pole Type Installation



Ceiling and Wall Installation



Zone 2.22

II 3G Ex ec IIC T4 Gc
II 3D Ex tc IIIC T135 Dc

PROLIT KOMPAKT POWER LED





PROLIT KOMPAKT POWER LED

PROLIT KOMPAKT, developed for Ex-Proof Zone 2.22 lighting, perfectly meets the need for efficient lighting. It provides resistance against heat and impacts with its body that shows extra resistance against explosion and fire risk. In addition to its body in IP66 class, it captures the best light output thanks to its economical LED. Especially designed for use in petrochemical, chemical production, shipbuilding, oil and gas industries. The product, which has ATEX and EAC certificates, meets the lighting needs in Zone 2.22 explosive environments in the best way.



Exproof Product Features

Zone	: Zone 2.22
Group / Category	: II / 3GD
Protection Class	: ec / tc
Explosion Group	: IIC / IIIC
Maximum Surface Temperature Class	: T4 / T135°
Certificate Code	: EX II 3G Ex ec IIC T4 Gc EX II 3D Ex tc IIIC T135°C Dc

Mechanical Features

Body	: Aluminium Injection Housing / Zone 2
Luminaire Surface	: Tempered Ground Glass
Sealing	: High Temperature Resistant Silicone Gasket
Gland (Inlet)	: Input std. 1 x ISO M16
Support Tools	: Internal Leg
Screws and bolts	: AISI 316L Stainless Steel
IP	: IP66

Electrical and Optical Properties

Light Source	: POWER LED
Consumption Power	: 40W / 51W / 62W / 75W / 96W
Lumen	: 5100 lm / 6100 lm / 7100 lm / 8034 lm / 11206 lm
Input Voltage	: 220-240V (50-60 Hz)
Colour Temperature	: 3000K / 4000K / 5700K
CRI	: > 70
Optical	: 16° / 27° / 52° / 98° / AS

Other Features

Support Type	: Ground Installation
Housing Colour	: MV 3004 (BLACK)

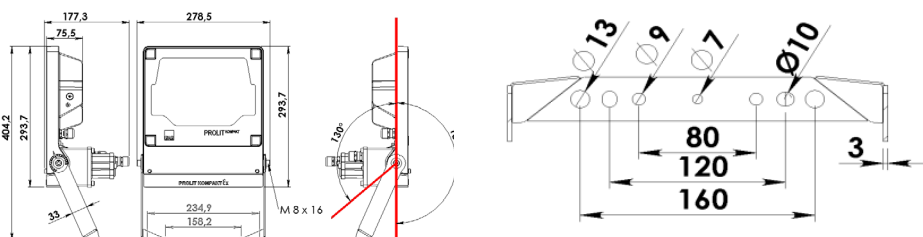
Options

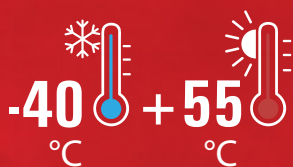
Gland Inlet	: ISO M20, ISO M25
Gland Outlet	: ISO M16, ISO M20, ISO M25
DALI	: Yes

Dimensions

Width	: 279 mm
Length	: 294 mm
Height	: 177 mm

Technical Drawing



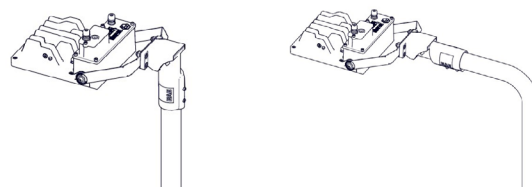


Order Chart

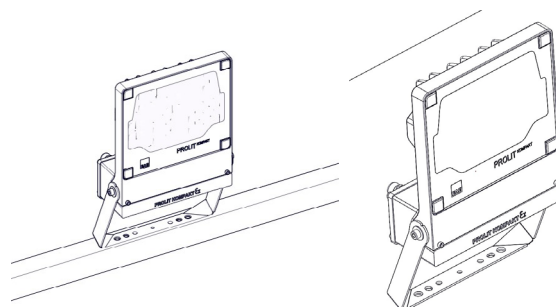
Order No.	Product Code	Power Consumption (W)	Weight (KG)
3207369	PRK 040Z 40EX00 16 5K1 V.3	40	5,25
3207370	PRK 040Z 40EX00 27 5K1 V.3	40	5,25
3207371	PRK 040Z 40EX00 52 5K1 V.3	40	5,25
3207372	PRK 040Z 40EX00 98 5K1 V.3	40	5,25
3207373	PRK 040Z 40EX00 AS 5K1 V.3	40	5,25
3207429	PRK 051Z 40EX00 16 6K1 V.3	51	5,25
3207430	PRK 051Z 40EX00 27 6K1 V.3	51	5,25
3207431	PRK 051Z 40EX00 52 6K1 V.3	51	5,25
3207432	PRK 051Z 40EX00 98 6K1 V.3	51	5,25
3207433	PRK 051Z 40EX00 AS 6K1 V.3	51	5,25
3207449	PRK 062Z 40EX00 16 7K1 V.3	62	5,25
3207450	PRK 062Z 40EX00 27 7K1 V.3	62	5,25
3207451	PRK 062Z 40EX00 52 7K1 V.3	62	5,25
3207452	PRK 062Z 40EX00 98 7K1 V.3	62	5,25
3207453	PRK 062Z 40EX00 AS 7K1 V.3	62	5,25
3184042	PRK 075Z 40EX00 16 8K10 V.3	75	5,5
3184043	PRK 075Z 40EX00 27 7K70 V.3	75	5,5
3184044	PRK 075Z 40EX00 52 7K50 V.3	75	5,5
3184045	PRK 075Z 40EX00 98 7K60 V.3	75	5,5
3184046	PRK 075Z 40EX00 AS 7K40 V.3	75	5,5

Support Tools

Pole Type Installation



Ceiling and Wall Installation



Zone 2.22

II 3G Ex ec IIC T4 Gc
II 3D Ex tc IIIC T135 Dc

HBC EX ZONE 2





HBC EX ZONE 2

With its round Aluminium Injection housing, HBC EX ZONE 2 offers high resistance in challenging conditions. Offering a long service life, HBC EX ZONE 2 is suitable for harsh weather conditions with its PMMA/PC surface. It is very efficient with its wide lumen range options and its economical MID POWER LED. Offering emergency kit and DALI options, this product minimizes possible lighting problems. Designed for harsh ambient conditions with temperature ranging from -30 °C to +55 °C, HBC EX ZONE 2 is the common solution of different industries which require lighting.



Exproof Product Features

Zone : Zone 2.21 / 2.22
 Group / Category : II / 3G / 2D
 Protection Class : nR / tb
 Explosion Group : IIC / IIIC
 Maximum Surface Temperature Class : T6 / T5
 Certificate Code : II 3G Ex nR IIC T5, T6 Gc
 II 2D Ex tb IIIC T100, T85°C Db

Mechanical Features

Body : Aluminium Injection
 Luminaire Surface : PMMA / PC
 Sealing : High Temperature Resistant Silicone Gasket
 Gland (Inlet) : Input std. 1 x ISO M16 / M20 / M25 (armored gland included)
 Support Tools : AISI 316L Stainless Steel
 Screws and bolts : AISI 316L Stainless Steel
 IP : IP66

Electrical and Optical Properties

Light Source : MID POWER LED
 Consumption Power : 75W / 98W / 115W / 154W / 181W / 197W
 Lumen : 8026 lm / 11470 lm / 13135 lm / 17517 lm / 19129 lm / 20125 lm
 Input Voltage : 220-240V (50-60 Hz)
 Colour Temperature : 2700K / 3000K / 4000K / 5000K / 5700K / 6500K
 CRI : > 80
 Optical : 50° / 80°

Other Features

Support Type : Ceiling, Support Installation
 Housing Colour : SW 306G (SMOKE-COLOURED)

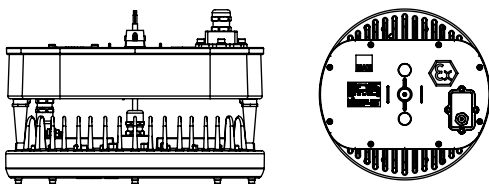
Options

Gland Inlet : ISO M16, M20, ISO M25
 Gland Outlet : ISO M16, ISO M20, ISO M25
 DALI : Yes
 Emergency Kit : Yes

Dimensions

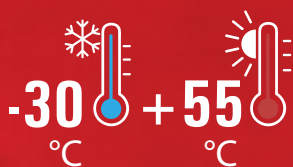
Width : 315 mm
 Height : 215 mm

Technical Drawing



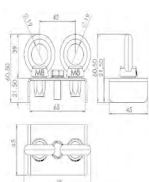
Order Chart

Order No.	Product Code	Power Consumption (W)	Weight (KG)
3204591	HBC 075U 57EX00 78 8K0 PC Z2	75	6,8
3204593	HBC 075U 57EX02 81 7K8 PC EMC Z2	75	7,2
3204596	HBC 098U 57EX00 76 10K6 PC Z2	98	6,7
3204601	HBC 115U 57EX00 78 14K4 PC Z2	115	7
3204605	HBC 115U 57EX02 49 13K1 PC EMC Z2	115	7,5
3204608	HBC 154U 57EX00 84 17K5 PC Z2	154	7
3204609	HBC 181U 57EX00 76 19K1 PC Z2	181	7
3204610	HBC 197U 57EX00 78 20K1 PC Z2	197	6,9



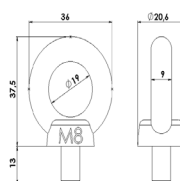
Support Tools

Pole Type Installation



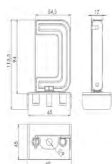
Order Code : 3224449
 Product Code : HBC EMERGENCY KIT SINGLE POINT SUPPORT SET (TN)

Pole Type Installation



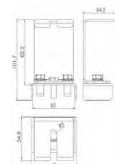
Order Code : 1014459
 Product Code : M8 EYEBOLT

Emergency Kit Busbar Suspension Set



Order Code : 3188239
 Product Code : HBC EMERGENCY KIT BUSBAR SUPPORT SET

Emergency Kit Busbar Suspension Set



Order Code : 3188240
 Product Code : HBC EMERGENCY KIT TRAY SUPPORT SET



Zone 2.21 / 2.22

II 3G Ex nR IIC T5, T6 Gc
 II 2D Ex tb IIIC T100, T85°C Db

CSD





CSD

Designed for Ex-Proof, Zone 2.22 lighting, Cushido polycarbonate housing with high impact and heat resistance guarantees a long service life. Offering alternative support types and an emergency kit option, this product provides safe light distribution thanks to its Polycarbonate diffuser. Cushido offers economy thanks to its MID POWER LED. With its advanced structure and affordable cost, it offers quality lighting solutions for harsh conditions with temperatures ranging from -25 °C to +55 °C.



Exproof Product Features

Zone : Zone 2.22
 Group / Category : II / 3GD
 Protection Class : nR / tc
 Explosion Group : IIC / IIIC
 Maximum Surface Temperature Class : T6 / T85°
 Certificate Code : EX II 3G Ex nR IIC T6 Gc
 EX II 3D Ex tc IIIC T85°C Dc

Electrical and Optical Properties

Light Source : MID POWER LED
 Consumption Power : 42W / 71W
 Lumen : 6100 lm / 10100 lm
 Input Voltage : 220-240V (50-60 Hz)
 Colour Temperature : 4000K / 6500K
 CRI : >80
 Optical : Obtuse Angle

Other Features

Support Type : Ceiling, Wall, Cable Tray, Angled
 Housing Colour : Grey Polyester

Dimensions

Width : 145 mm
 Length : 1272 / 1572 mm
 Height : 111 mm

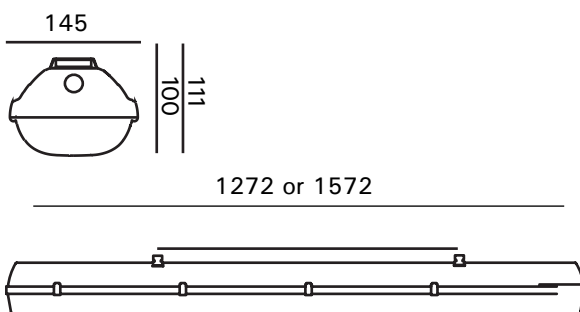
Mechanical Features

Body : Robust Polycarbonate Housing (PC) with High Mechanical Resistance
 Luminaire Surface : Robust Polycarbonate Diffuser (PC) with High Mechanical Resistance
 Sealing : High Temperature Resistant Silicone Gasket
 Gland (Inlet) : Input std. 1 x ISO M20
 Support Tools : AISI 316L Stainless Steel
 Screws and bolts : AISI 316L Stainless Steel
 IP : IP66

Options

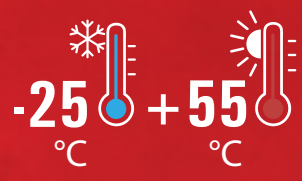
Emergency Kit : Yes (1 hours or 3 hours)

Technical Drawing



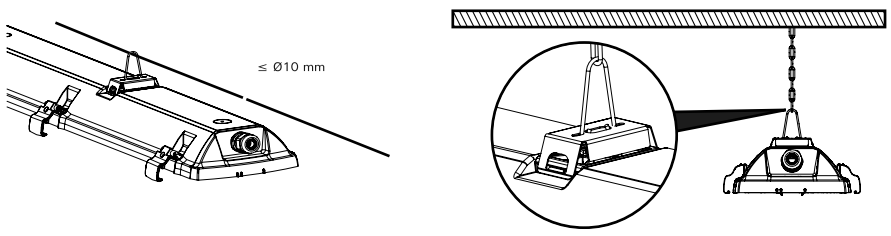
Order Chart

Order No.	Product Code	Power Consumption (W)	Weight (KG)
3188599	CSD 043U 40EX00 6K1 120	43	3,4
3188583	CSD 071U 40EX00 10K1 150	71	4,4

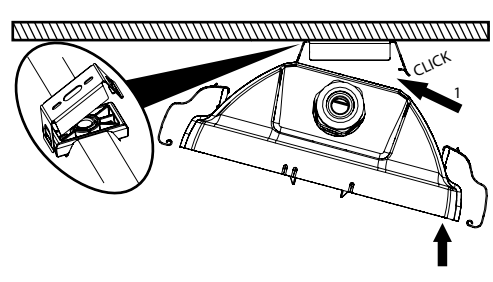


Support Tools

Wall Installation and Ceiling Support Installation

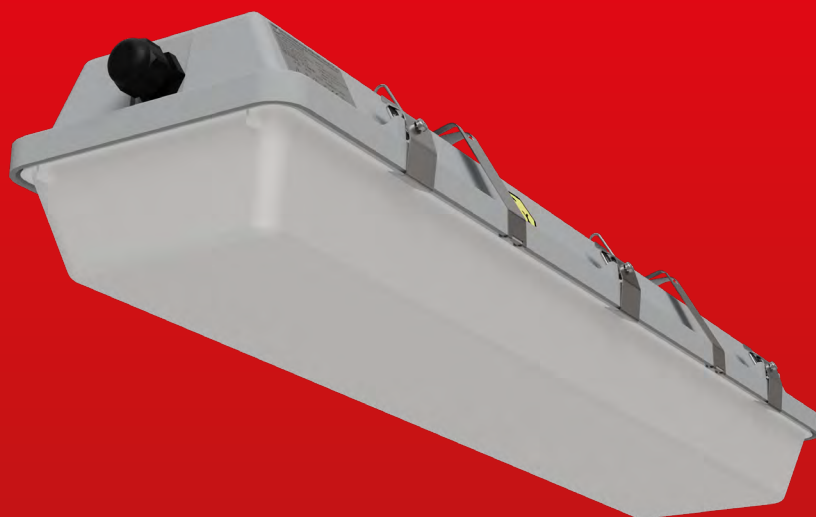


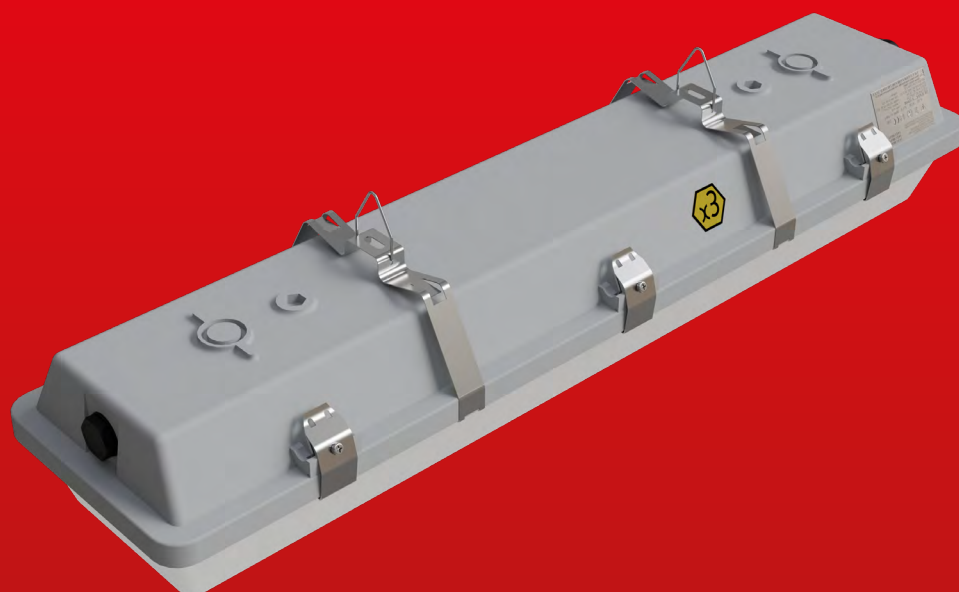
Ceiling and Wall / Angled Installation



Zone 2.22
 II 3G Ex nR IIC T6 Gc
 II 3D Ex tc IIIC T85 Dc

EX-COR ZONE 2





EX-COR ZONE 2

EX-COR ZONE 2 can serve for long periods of time by showing excellent resistance in corrosive areas with its glass-reinforced polyester body. Also it provides unique illumination in its class in terms of illumination power and technologies. EX-COR ZONE 2 designed using innovative technologies such as adjustable light intensity and traceable battery option. Thus, it is capable of providing both classical and innovative lighting requirements.



Exproof Product Features

Zone : Zone 2.22
Group / Category : II / 3GD
Protection Class : nR / tc
Explosion Group : IIC / IIIC
Maximum Surface Temperature Class : T6 / T85°
Certificate Code : EX II 3G Ex nR IIC T6 Gc
EX II 3D Ex tc IIIC T85°C Dc

Mechanical Features

Body : GRP Body (Glass reinforced polyester, compression moulded)
Diffuser : PC (Polycarbonate) Opal
Sealing : Polyurethane Cast Gasket
Gland (Inlet) : 1x M20 , M25 / Armored / Non-Armored
Gland (outlet) : 1x M20 , M25 / Armored / Non-Armored
Support Tools : Surface Mounted
Screws and bolts : Stainless Steel
IP : IP66

Electrical and Optical Properties

Light Source : LED
Consumption Power : 29W / 40W / 51W / 60W / 72W / 81W
Lumen : 3478 lm / 5117 lm / 6487 lm / 7538 lm / 8961 lm / 9900 lm
Input Voltage : 220-240V (50-60 Hz)
Colour Temperature : 2700K / 3000K / 4000K / 5000K / 5700K / 6500K
CRI : > 80
Optical : Wide Angle

Other Features

Support Type : Surface Mounted , Pendant
Housing Colour : Grey Polyester

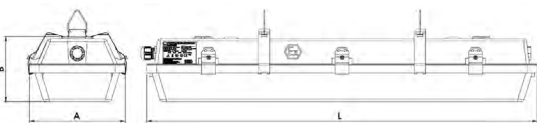
Options

Emergency Kit : Yes (3 hours)

Dimensions

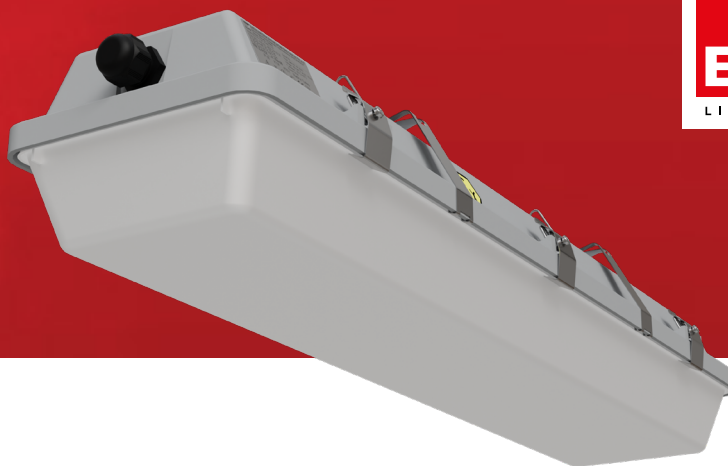
Width : 172 mm
Length : 702 mm / 1312 mm / 1602 mm
Height : 115 mm
Weight : 2,6 Kg - 4,3 Kg

Technical Drawing



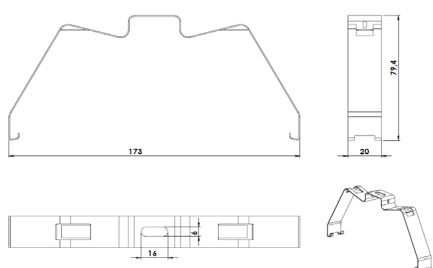
Order Chart

Order No.	Product Code	Power Consumption (W)	Weight (KG)
3298157	COR 029U 40EX00 3K48 60 Z2.22	29	2,6
3325161	COR 040U 40EX00 5K12 120 Z2.22	40	3,6
3298161	COR 051U 40EX00 6K49 120 Z2.22	51	3,6
3325177	COR 060U 40EX00 7K54 150 Z2.22	60	4
3325187	COR 072U 40EX00 8K96 150 Z2.22	72	4
3298165	COR 081U 40EX00 9K90 150 Z2.22	81	4

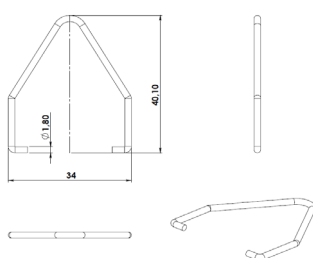


Support Tools

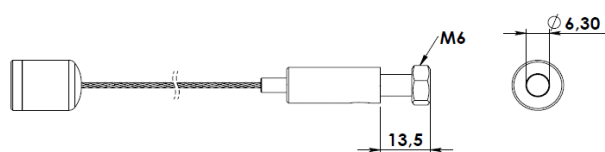
Cable Tray Mounting



Spring Hanger Set



Elevator Hanger Set



Zone 2.22

EX II 3G Ex nR IIC T6 Gc
EX II 3D Ex tc IIIC T85°C Dc

GALIS EXPROOF





GALIS EXPROOF

GALIS is the combination of high efficiency and technology with explosion protection. The high-efficiency LED inside is equipped with an IP66 body and can be used in Zone 2 areas in gas-fired facilities and Zone 21 areas in dusty environments. With its aluminum extrusion body, various length and body options are sufficient to meet every need in explosive areas.



Exproof Product Features

Zone : Zone 2.21 / 2.22
 Group / Category : II / 3G / 2D
 Protection Class : nR / tb
 Explosion Group : IIC / IIIC
 Maximum Surface Temperature Class : T6 / T55°
 Certificate Code : EX II 3G Ex nR IIC T6 Gc
 EX II 2D Ex tb IIIC T55°C Db

Mechanical Features

Body : Alluminum Extrusion Hosuing
 Luminaire Surface : Clear Glass
 Sealing : High Resistance Cast Sealing
 Gland (Inlet) : ISO M20,M25
 Gland (outlet) : ISO M20,M25
 Support Tools : Surface Mounted , Pendant
 Screws and bolts : Stainless Steel
 IP : IP66

Electrical and Optical Properties

Light Source : LED
 Consumption Power : 19W / 23W / 28W / 37W / 55W / 70W
 Lumen : 2440 lm / 3160 lm / 4110 lm / 5210 lm / 7700 lm / 9720 lm
 Input Voltage : 220-240V (50-60 Hz)
 Colour Temperature : 4000K
 CRI : > 80
 Optical : Wide Angle

Other Features

Support Type : Surface Mounted
 Housing Colour : Grey Painted Alluminum

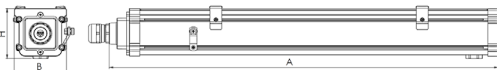
Options

Emergency Kit : Yes (3 hours)

Dimensions

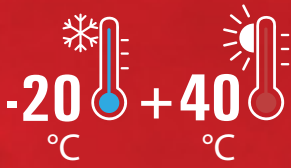
Width : 176 mm
 Length : 566 mm / 886 mm / 1286 mm / 1528 mm / 1315 mm / 1557 mm
 Height : 76 mm
 Weight : 2,3 Kg - 5,4 Kg

Technical Drawing



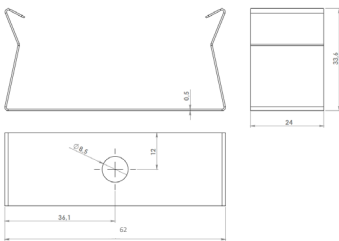
Order Chart

Order No.	Product Code	Power Consumption (W)	Weight (KG)
3280264	GLS 019U 40EX00 2K44 60 Z2.21	19	2,3
3280270	GLS 023U 40EX00 3K16 90 Z2.21	23	3,2
3280288	GLS 028U 40EX00 4K11 120 Z2.21	28	4
3280294	GLS 37U 40EX00 5K21 120 Z2.21	37	4
3280396	GLS 55U 40EX00 7K71 150 Z2.21	55	4,4
3280402	GLS 70U 40EX00 9K72 150 Z2.21	70	5

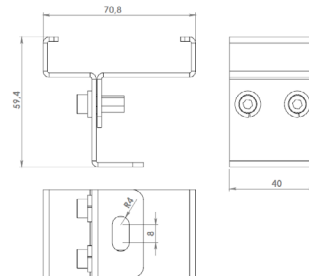


Support Tools

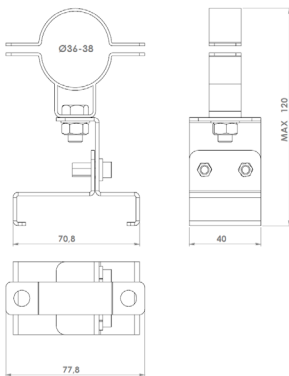
Fastening Spring



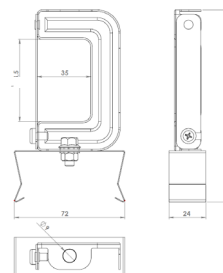
Elevator Hanger Set



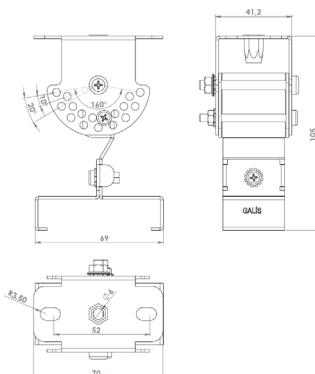
Ceiling Mounting



Box Profile Hanger Set



Adjustable Hanger Kit Set



Zone 2.21 / 2.22

EX II 3G Ex nR IIC T6 Gc
EX II 2D Ex tb IIIC T55°C Db

EX-VYR





EX-VYR

Designed for the lighting needs of Zone 2.22, EX-VYR is suitable for facilities with flammable and explosive properties with its advanced mechanical features. The product with emergency lighting offers maximum lighting performance in explosive environments where the temperature reaches from -20 °C to +50 °C in harsh ambient conditions.



Exproof Product Features

Zone : Zone 2.22
Group / Category : II / 3GD
Protection Class : nR / tc
Explosion Group : IIC / IIIC
Maximum Surface
Temperature Class : T6 / T65°
Certificate Code : EX II 3G Ex nR IIC T6 Gc
EX II 3D Ex tc IIIC T65°C Dc

Mechanical Features

Body : Plastic material PC
Luminaire Surface : PC (Polycarbonate) Opal
Sealing : Temperature Resistant Silicone
Gland (Inlet) : 2x M20
Gland (outlet) : 2x M20
Support Tools : Surface Mounted
Screws and bolts : Stainless Steel
IP : IP66

Electrical and Optical Properties

Light Source : LED
Consumption Power : 13.8W
Lumen : 1057.4 lm
Input Voltage : 220-240V (50-60 Hz)
Colour Temperature : 4000K
CRI : > 80
Optical : Obtuse Angle

Other Features

Support Type : Surface Mounted
Housing Colour : Grey Polyester

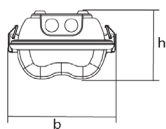
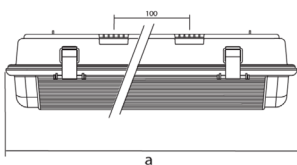
Options

Emergency Kit : Yes (3 hours)

Dimensions

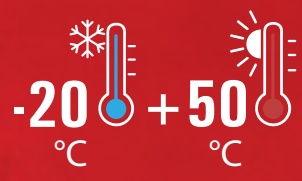
Width : 176 mm
Length : 338 mm
Height : 110 mm
Weight : 4 Kg

Technical Drawing



Order Chart

Order No.	Product Code	Power Consumption (W)	Weight (KG)
3266115	VYR 014U 40EX02 1K0 66 ZONE-2	13,8	0,8

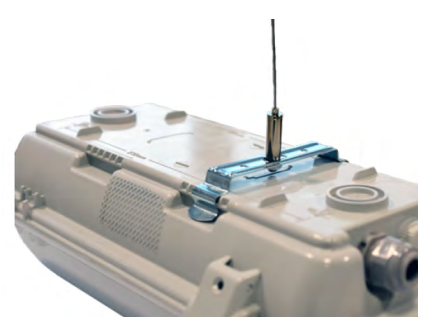


Support Detail

Wall Mounting



Ceiling Mounting



Zone 2.22
EX II 3G Ex nR IIC T6 Gc
EX II 3D Ex tc IIIC T65°C Dc

GALIS EXPROOF EXIT





GALIS EXPROOF EXIT

GALIS EX-PROOF EXIT is a perfect example of emergency exit lighting design in explosive areas. Designed to be used in Zone 2.21 / 2.22 areas, the product has optional electronic control options for maintenance and non-maintenance.



Exproof Product Features

Zone : Zone 2.21 / 2.22
 Group / Category : 3G / 2D
 Protection Class : Gc / Db
 Explosion Group : IIC / IIIC
 Maximum Surface Temperature Class : T6 / T55°
 Certificate Code : EX II 3G Ex nR IIC T6 Gc
 EX II 2D Ex tb IIIC T55°C Db

Mechanical Features

Body : Alluminum Extrusion
 Luminaire Surface : Clear Glass
 Sealing : Temperature Resistant Silicone
 Gland (Inlet) : 2x M20
 Gland (outlet) : 2x M20
 Support Tools : Surface Mounted
 Screws and bolts : Stainless Steel
 IP : IP66

Electrical and Optical Properties

Light Source : LED
 Consumption Power : 4W / 5W
 Lumen : 1057.4 lm
 Input Voltage : 220-240V (50-60 Hz)
 Colour Temperature : 2700K / 3000K / 4000K / 5000K / 5700K / 6500K
 CRI : > 80
 Optical : Wide Angle

Other Features

Support Type : Surface Mounted
 Housing Colour : Grey Painted Alluminum

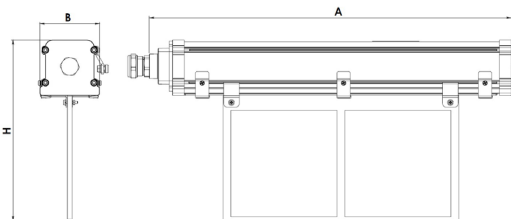
Options

Emergency Kit : Yes (3 hours)

Dimensions

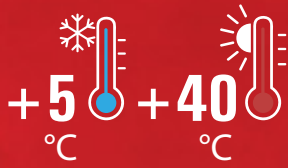
Width : 460 mm
 Length : 230 mm
 Height : 76 mm
 Weight : 2,1 Kg

Technical Drawing



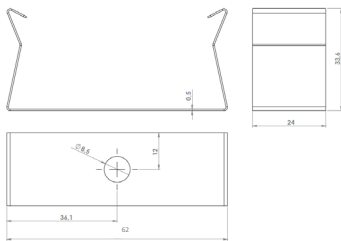
Order Chart

Order No.	Product Code	Power Consumption (W)	Weight (KG)
3323383	GLS 005U 40EX01 0K63 50 Z2.21 EXIT	5	2,1
3299000	GLS 005U 40EX01 0K63 50 Z2.21 EXIT	5	2,1
3323389	GLS 005U 40EXA1 0K63 50 Z2.21 EXIT	5	2,1
3323390	GLS 005U 40EXA2 0K63 50 Z2.21 EXIT	5	2,1
3323387	GLS 005U 40EX83 0K63 50 Z2.21 EXIT	5	2,1
3323388	GLS 005U 40EXA0 0K63 50 Z2.21 EXIT	5	2,1
3323391	GLS 004U 40EX01 0K50 50 Z2.21 EXIT	4	2,1
3323392	GLS 004U 40EX02 0K50 50 Z2.21 EXIT	4	2,1
3323399	GLS 004U 40EXA1 0K50 50 Z2.21 EXIT	4	2,1
3323400	GLS 004U 40EXA2 0K50 50 Z2.21 EXIT	4	2,1
3323397	GLS 004U 40EX83 0K50 50 Z2.21 EXIT	4	2,1
3323398	GLS 004U 40EXA0 0K50 50 Z2.21 EXIT	4	2,1

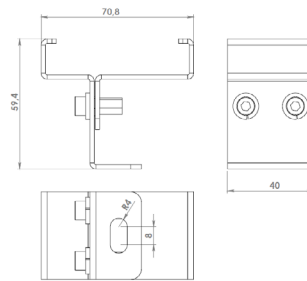


Support Tools

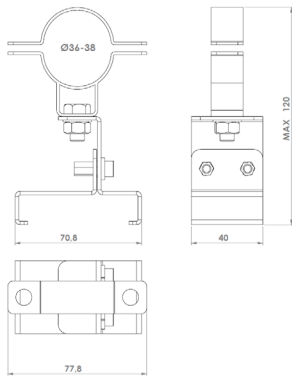
Fastening Spring



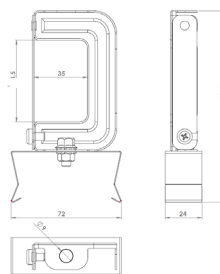
Elevator Hanger Set



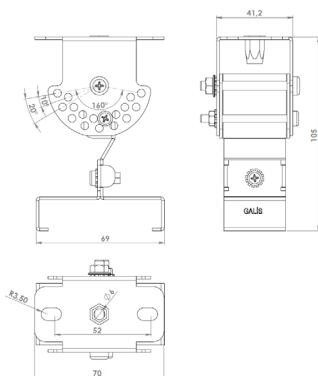
Ceiling Mounting



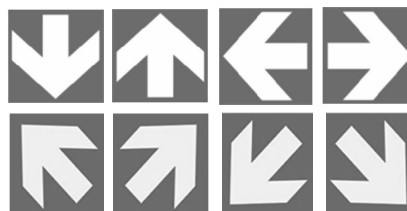
Box Profile Hanger Set



Adjustable Hanger Kit Set



Adjustable Hanger Kit Set



Zone 2.21 / 2.22

EX II 3G Ex nR IIC T6 Gc

EX II 2D Ex tb IIIC T55°C Db





EAE LIGHTING Inc.

Ikitelli Organize Sanayi Bolgesi
Eski Turgut Ozal Caddesi No:20
Basaksehir / ISTANBUL - TURKEY
Tel : +90 212 413 21 00 (pbx)
Fax : +90 212 549 37 90
www.eaelighting.com

engineering the light